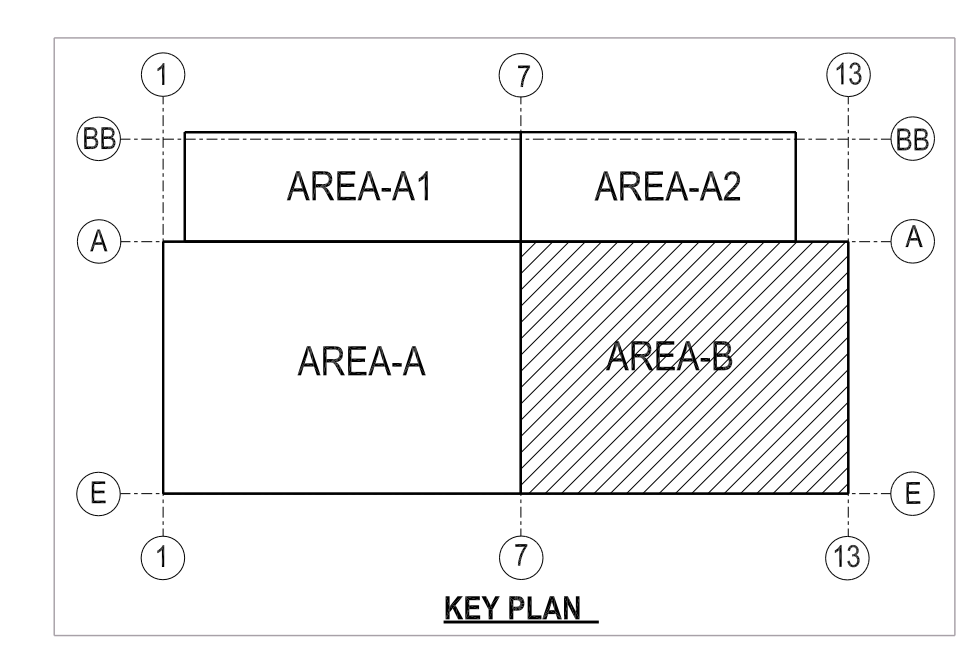


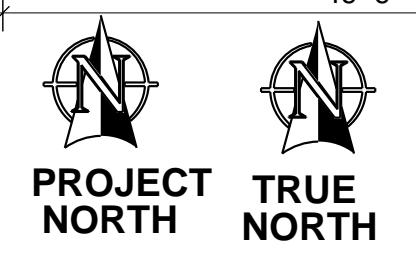
NOTE :-
 ALL DECK ANGLES PROFILE IS L3X3X $\frac{3}{16}$ (U.N.O)
 ALL PLATES PROFILE IS $\frac{1}{2}$ THICKNESS (U.N.O)

LEGEND:-
 T.O.C - TOP OF COLUMN
 B.O.D - BOTTOM OF DECK
 MC - MOMENT CONNECTION



- ALL MATERIAL TO BE A36 UNLESS NOTED
- ALL TUBES TO BE A500-GRC (Fy=50) UNLESS NOTED
- ALL PIPES TO BE A53-GRB UNLESS NOTED
- ALL HS SHOP BOLTS TO BE TORQUED UNLESS NOTED
- ALL RUNNING DIMENSIONS FROM END OF MAIN MATERIAL
- ALL SHOP WELDS TO BE E70XX-LH ELECTRODES
- ALL COPES TO BE RADIUS
- ALL BEAMS TO BE FABRICATED WITH RESIDUAL CAMBER UP
- MEMBERS ARE TO BE ERCTED SO THAT MARKED END IS IN SAME LOCATION AS ON ERECTION DRAWING

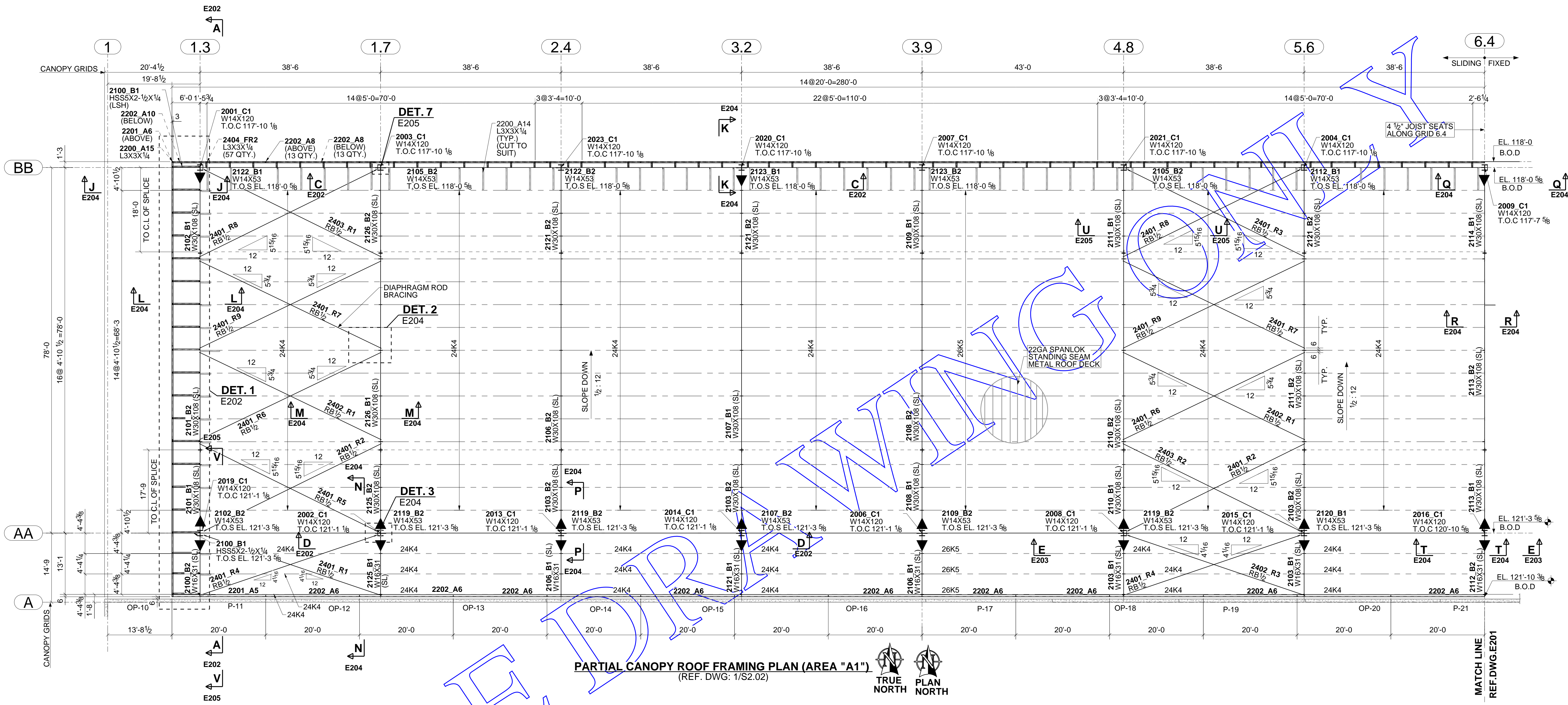
PARTIAL ROOF FRAMING PLAN - AREA "B"
 (REF. DWG:S2.01B)



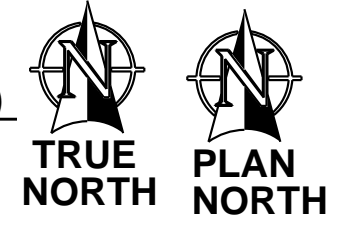
DATE:	USE	DRAW BY: SAM	DATE:02/18/20	TEKLA VERSION: 21.1
-------	-----	--------------	---------------	---------------------

DRAW BY: SAM	CHECKED BY: MAK	CONNECTIONS
DATE:	DATE:	3/4 Ø A325
		UNLESS NOTED

DETAILS OF : PARTIAL ROOF FRAMING PLAN - AREA "B"		REF. DWG. NO : S2.01B
DWG. NO.	JOB NO.	
E101	20-1044	



PARTIAL CANOPY ROOF FRAMING PLAN (AREA "A1")
 (REF. DWG: 1/S2.02)



SAMPLE

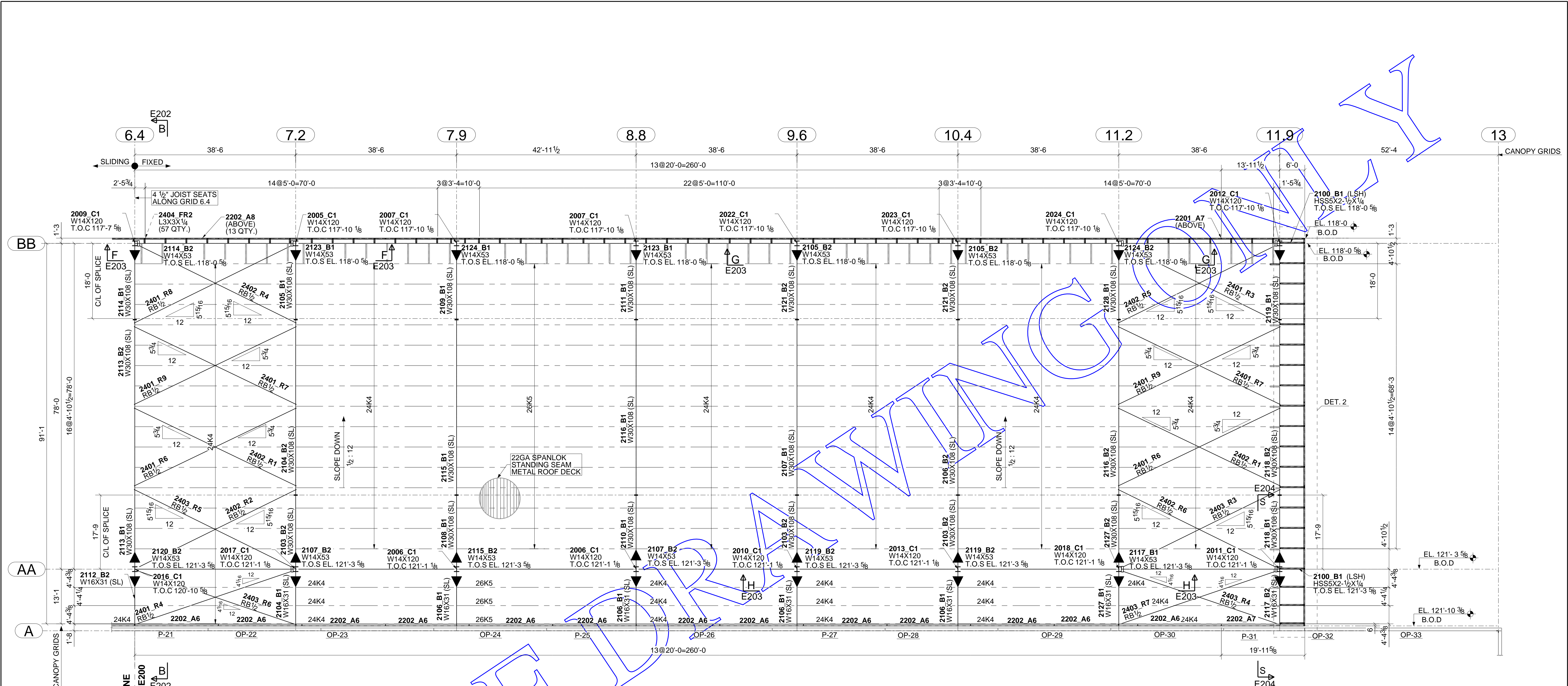
- LEGEND:-**
- ▶ - MOMENT CONNECTION
 - SL - SLOPED
 - T.O.C - TOP OF COLUMN
 - T.O.S.EL. - TOP OF STEEL ELEVATION
 - B.O.D - BOTTOM OF DECK

NOTE:-
 ALL DECK ANGLE PROFILE IS L3X3X5/16 (U.N.O)

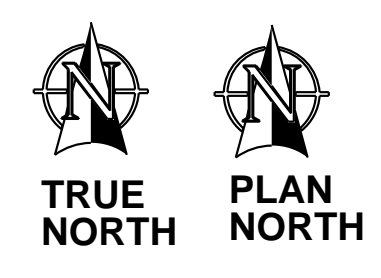
- ALL MATERIAL TO BE A36 UNLESS NOTED
- ALL TUBES TO BE A500-GRC (Fy=50) UNLESS NOTED
- ALL PIPES TO BE A53-GRB UNLESS NOTED
- ALL HS SHOP BOLTS TO BE TORQUED UNLESS NOTED
- ALL RUNNING DIMENSIONS FROM END OF MAIN MATERIAL
- ALL SHOP WELDS TO BE E70XX-LH ELECTRODES
- ALL COPES TO BE RADIUS
- ALL BEAMS TO BE FABRICATED WITH RESIDUAL CAMBER UP
- MEMBERS ARE TO BE ERRECTED SO THAT MARKED END IS IN SAME LOCATION AS ON ERECTION DRAWING

DETAILS OF : PARTIAL CANOPY ROOF FRAMING PLAN (AREA "A1") REF. DWG. NO : S2.02

DATE:	USE	DRAW BY: SAM	DATE: 02/18/20	TEKLA VERSION: 21.1	DRAW BY: SAM	CHECKED BY: MAK	CONNECTIONS 3/4 Ø A325 UNLESS NOTED	DWG. NO. E200	JOB NO. 20-1044
-------	-----	--------------	----------------	---------------------	--------------	-----------------	---	------------------	--------------------



PARTIAL CANOPY ROOF FRAMING PLAN AREA "A2"
(REF. DWG: S2.02)



LEGEND:-

- ▶ - MOMENT CONNECTION
- SL - SLOPED
- T.O.C - TOP OF COLUMN
- T.O.S.EL. - TOP OF STEEL ELEVATION
- B.O.D - BOTTOM OF DECK

NOTE:-
ALL DECK ANGLE PROFILE IS L3X3X⁵/₁₆ (U.N.O)

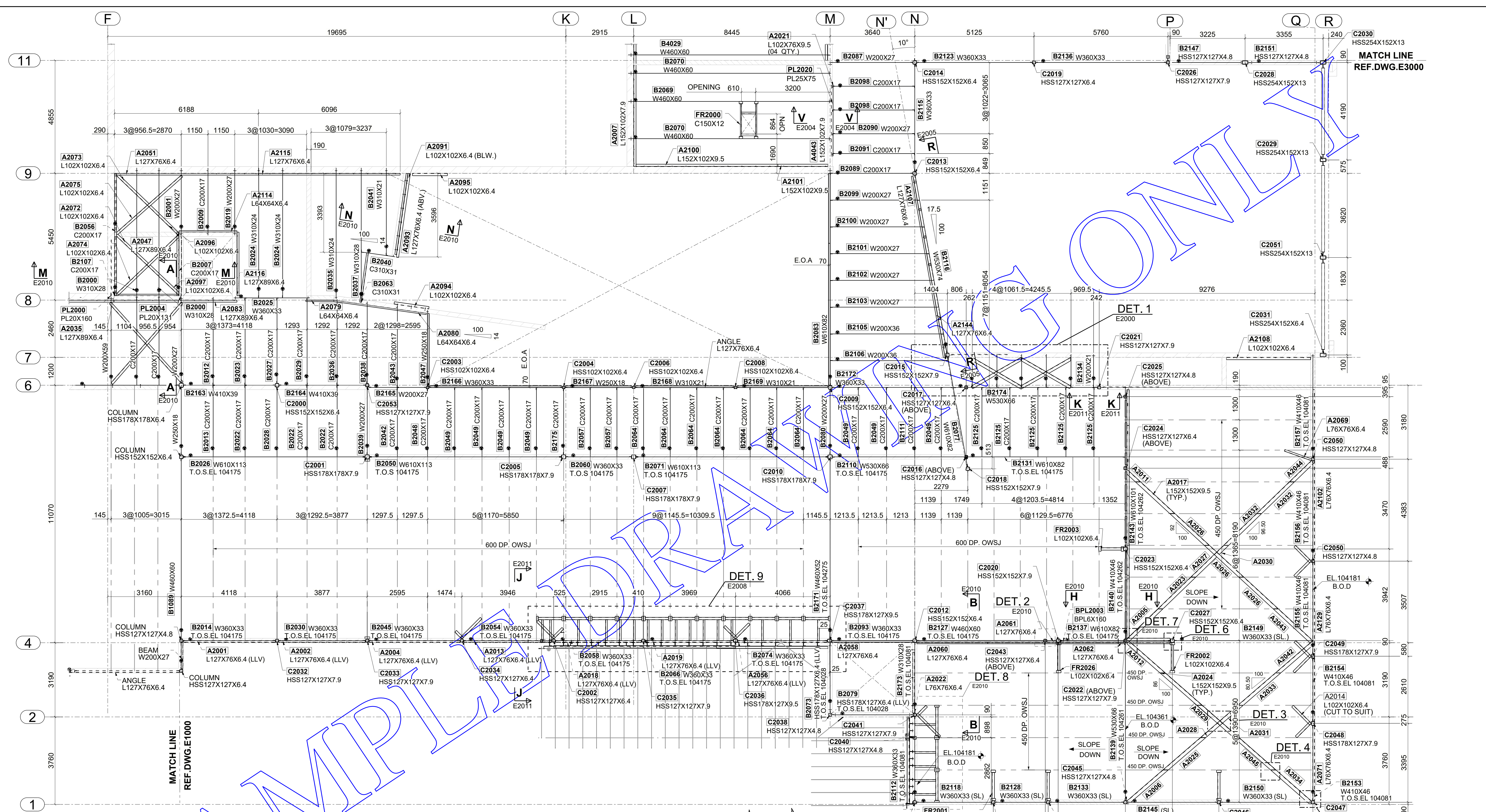
- ALL MATERIAL TO BE A36 UNLESS NOTED
- ALL TUBES TO BE A500-GRC (Fy=50) UNLESS NOTED
- ALL PIPES TO BE A53-GRB UNLESS NOTED
- ALL HS SHOP BOLTS TO BE TORQUED UNLESS NOTED
- ALL RUNNING DIMENSIONS FROM END OF MAIN MATERIAL
- ALL SHOP WELDS TO BE E70XX-LH ELECTRODES
- ALL COPIES TO BE RADIUS
- ALL BEAMS TO BE FABRICATED WITH RESIDUAL CAMBER UP
- MEMBERS ARE TO BE ERCTED SO THAT MARKED END IS IN SAME LOCATION AS ON ERECTION DRAWING

DETAILS OF : PARTIAL ROOF FRAMING PLAN - AREA "A2" REF. DWG. NO : S2.02

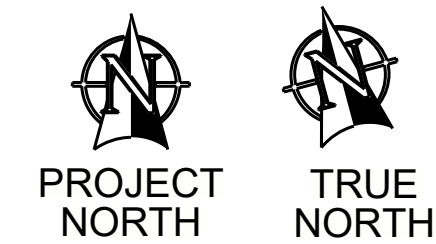
SAMPLE

DATE:	USE	DRAW BY: SAM	TEKLA VERSION: 21.1	DRAW BY: SAM	CHECKED BY: MAK	CONNECTIONS
				DATE:	DATE:	3/4 Ø A325
						UNLESS NOTED

DWG. NO.	JOB NO.
E201	20-1044



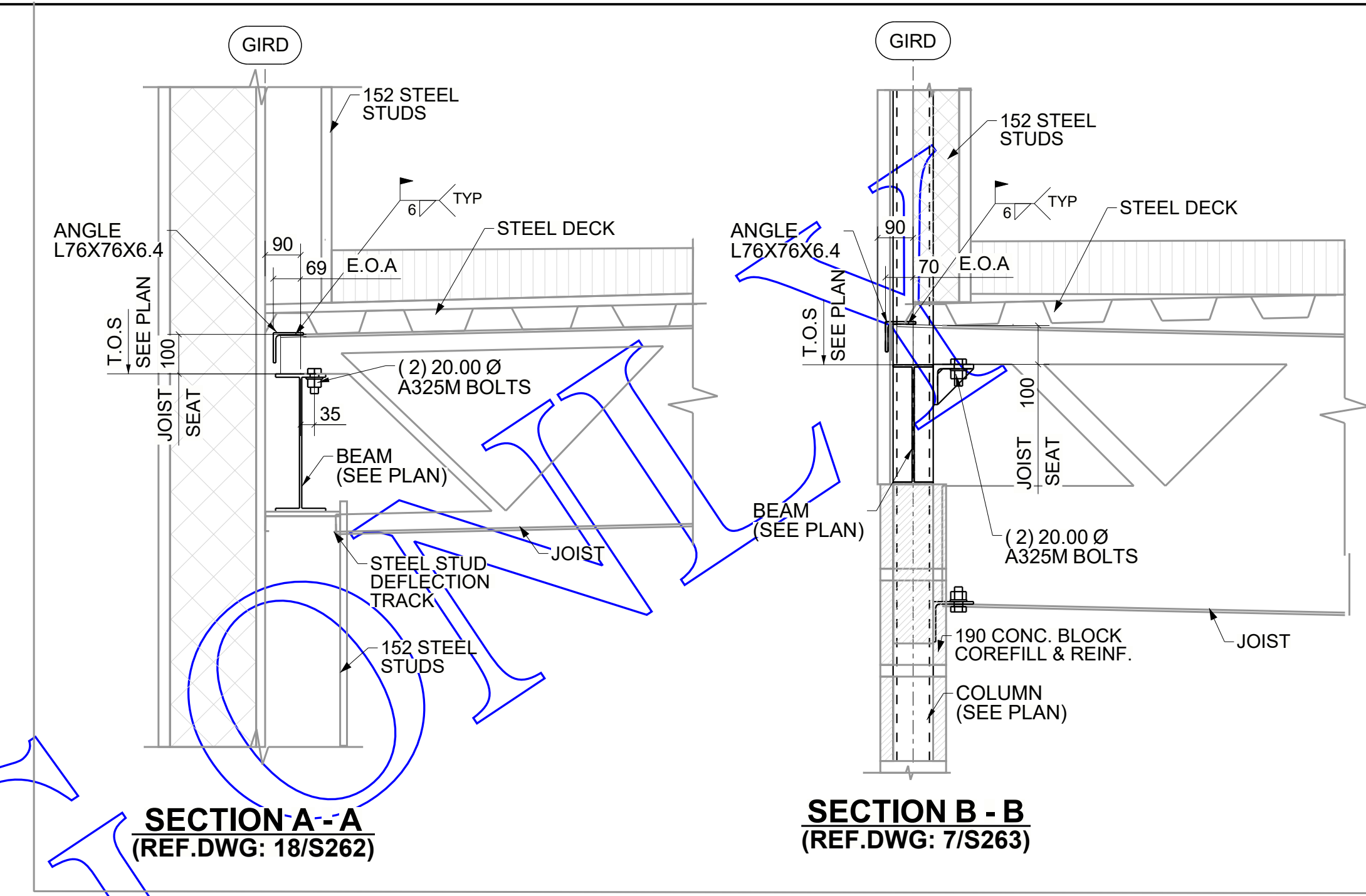
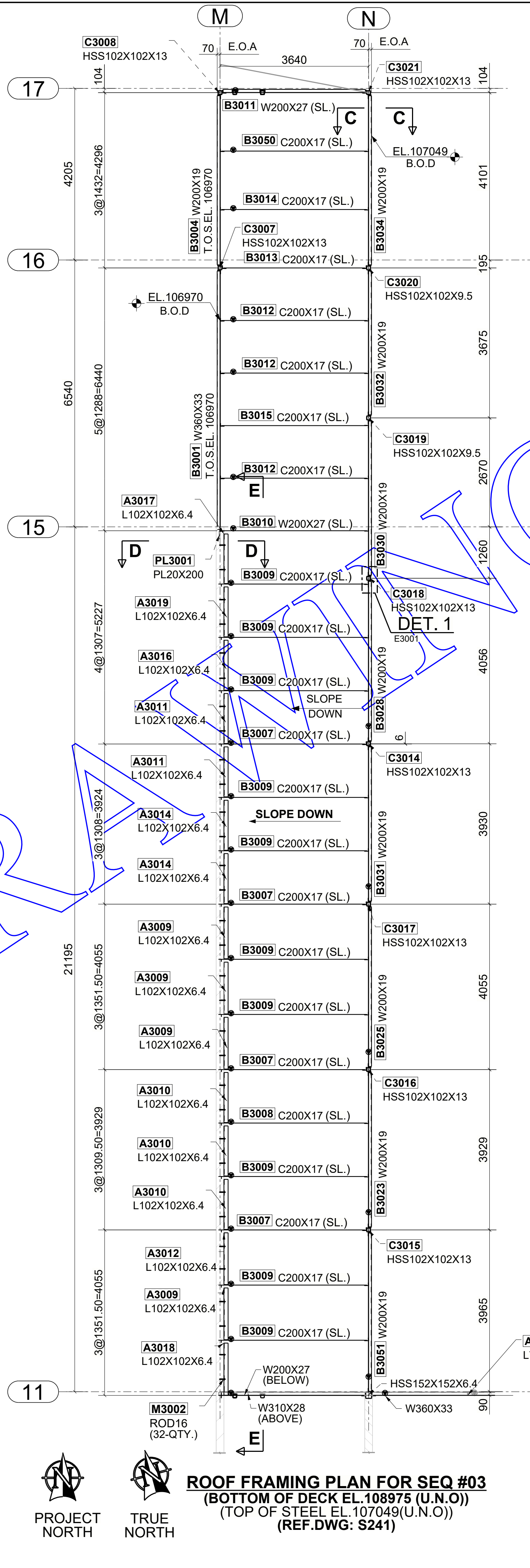
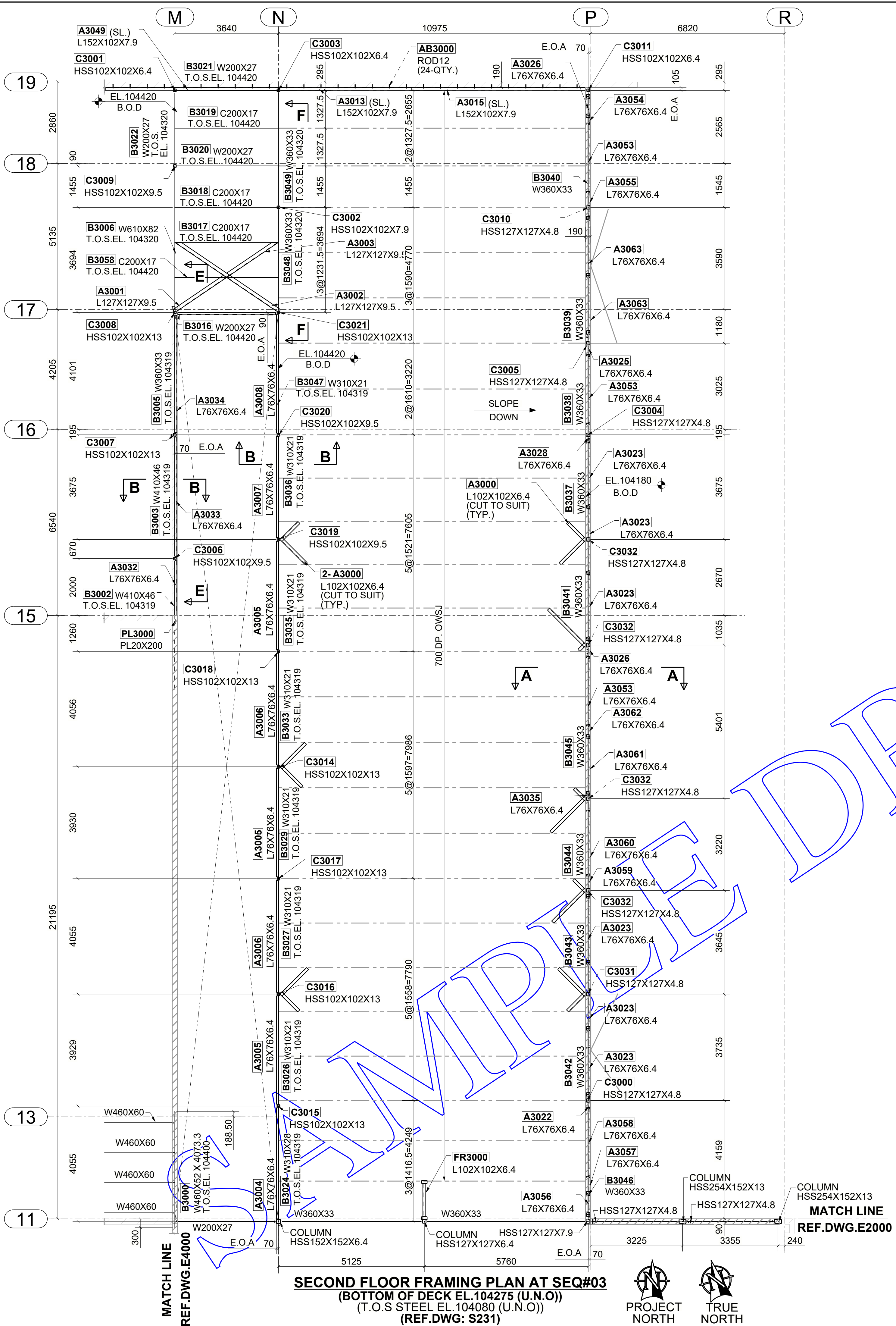
SECOND FLOOR FRAMING PLAN AT SEQ#02
 (BOTTOM OF DECK EL. 104275 (U.N.O))
 (TOP OF STEEL EL. 104275(U.N.O))
 (REF. DWG: S231)



GC NOTE:-
 G.C TO VERIFY CLOUDED BEAM LOCATION PRIOR TO STAIR INSTALLATION.

NOTE #1: ARCHITECT, ENGINEER & G.C. PLEASE NOTE:
 IF NO COMMENTS APPEAR ON THIS DRAWING WHEN THE DRAWING ISSUED FOR APPROVAL / REVIEW, THEN ECOSSE WELDING.
 WILL ASSUME THAT ITS INTERPRETATION OF ARCHITECTURAL AND STRUCTURAL DRAWINGS IS ACCEPTABLE BY ALL PARTIES AND FABRICATION WILL PROCEED ACCORDINGLY.

PROJECT:		REVISION:	
CUSTOMER:		REV: 0	
DETAIL: PARTIAL SECOND FLOOR FRAMING PLAN AT SEQ#02			
DRAWN BY: SGH	CHECKED BY: MAK	JOB NUMBER: 7000	DWG NUMBER: E2000
DATE:	PLOT DATE:		

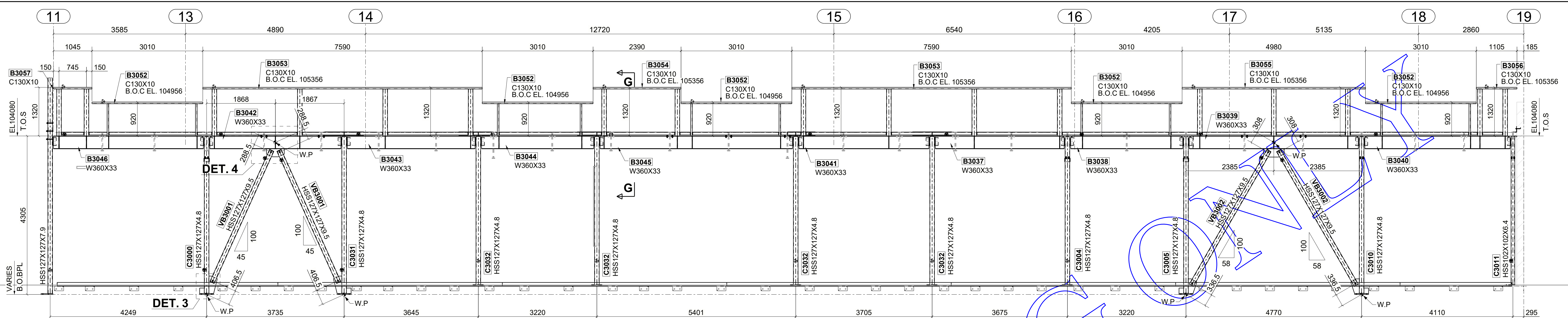


LEGEND:

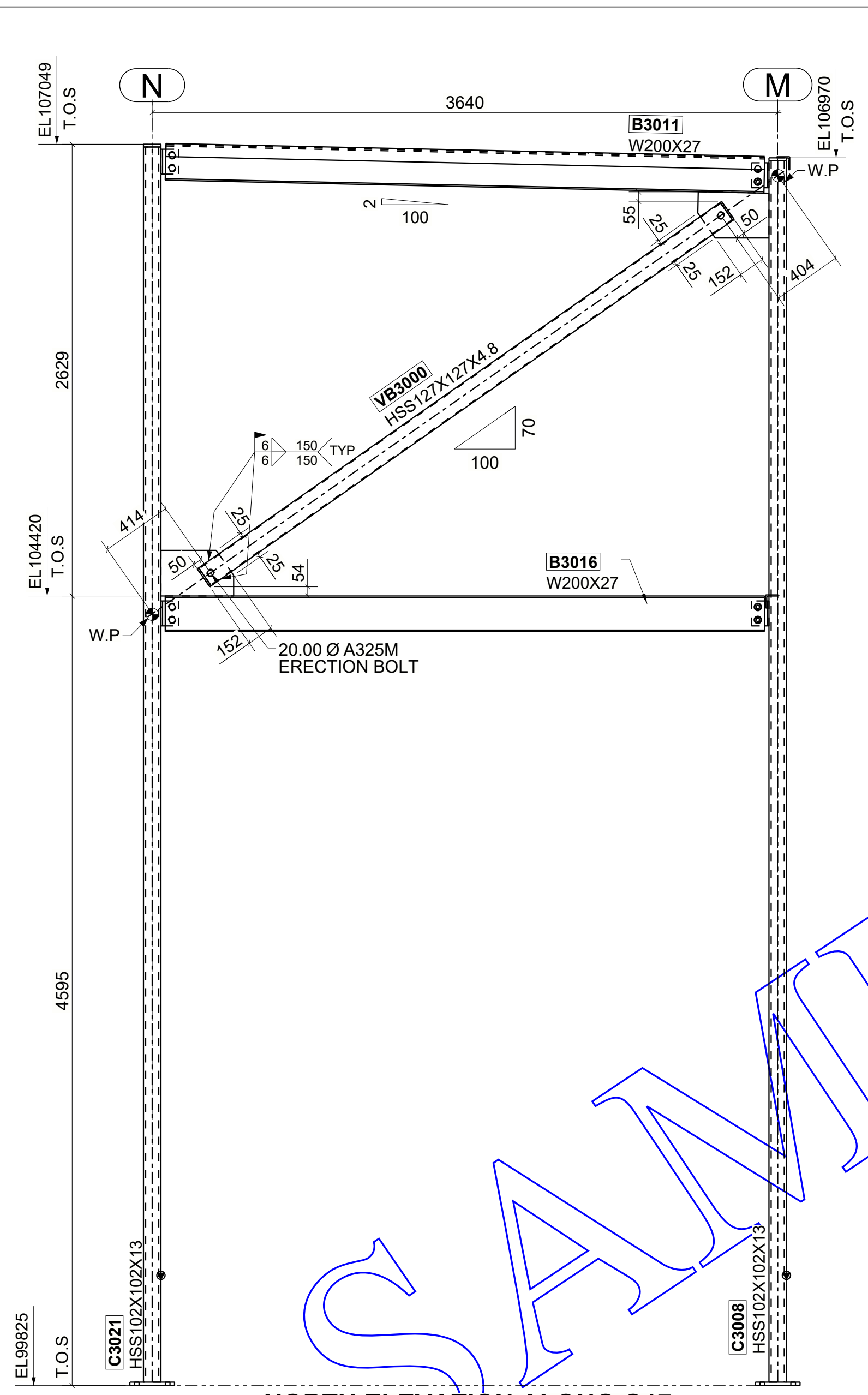
- BEAM ORIENTATION MARK
- INDICATED VERTICAL BRACE

NOTE #1: ARCHITECT, ENGINEER & G.C. PLEASE NOTE:
 IF NO COMMENTS APPEAR ON THIS DRAWING WHEN THE DRAWING ISSUED FOR APPROVAL / REVIEW, THEN ECOSSE WELDING.
 WILL ASSUME THAT ITS INTERPRETATION OF ARCHITECTURAL AND STRUCTURAL DRAWINGS IS ACCEPTABLE BY ALL PARTIES AND FABRICATION WILL PROCEED ACCORDINGLY.

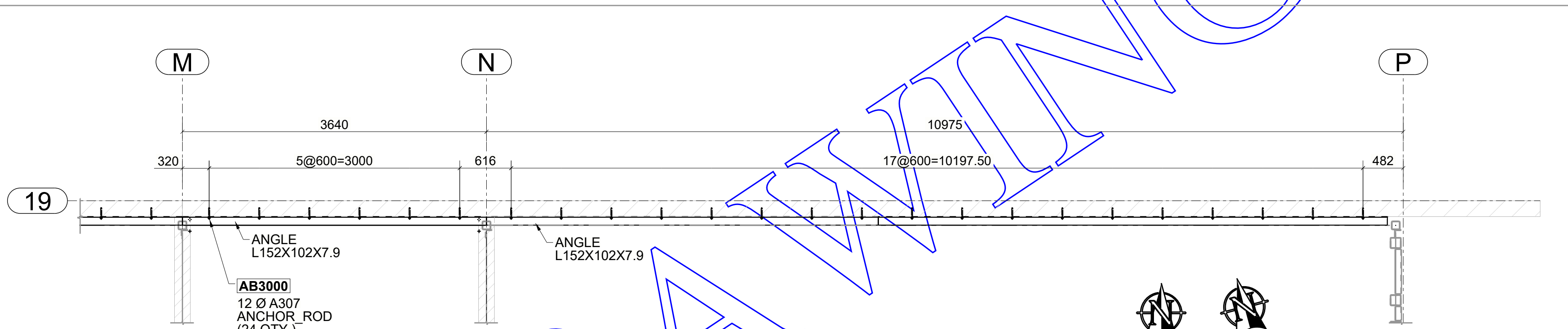
PROJECT:		CUSTOMER:		REV: 1
DETAIL: PARTIAL SECOND FLOOR FRAMING PLAN AT SEQ#03		DATE:		
DRAWN BY: SAM	CHECKED BY: MAK	JOB NUMBER: 7000	DWG NUMBER: E3000	



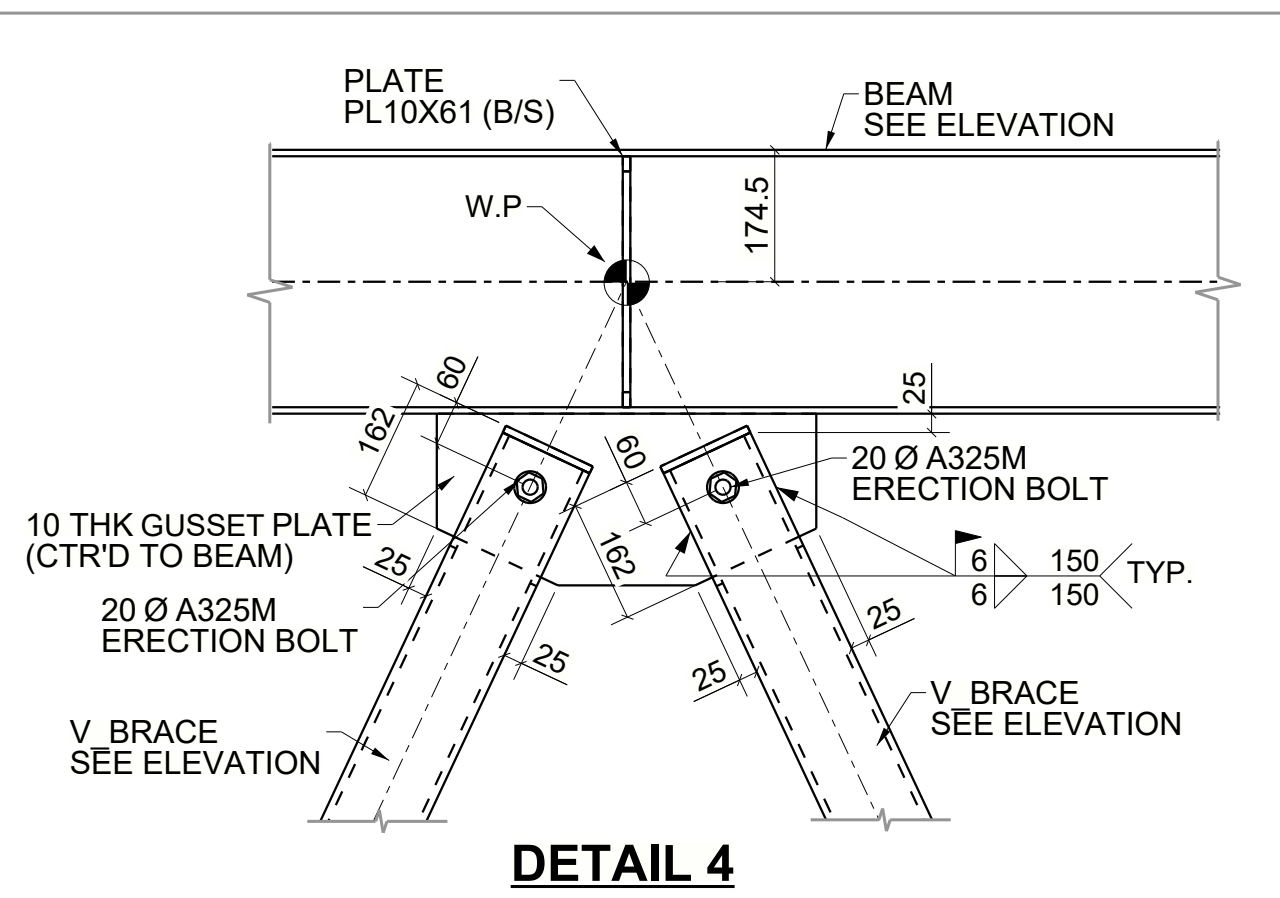
EAST ELEVATION ALONG GL P
(REF.DWG: 6/S281)



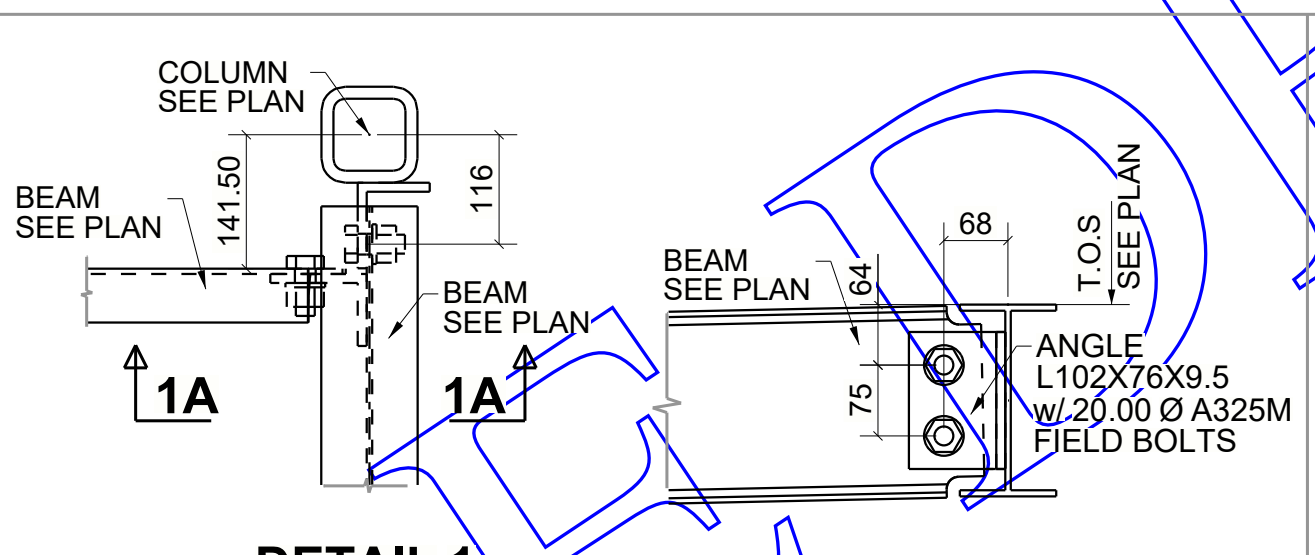
NORTH ELEVATION ALONG G17
(REF.DWG: 5/281)



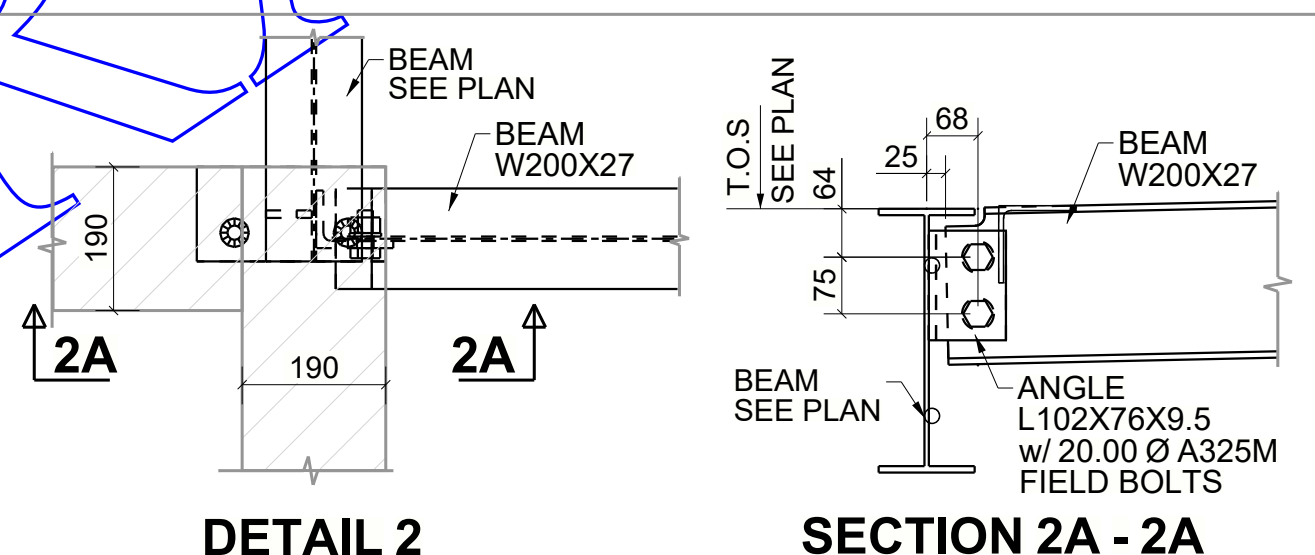
ANCHORS LOCATING PLAN AT LEVEL 2 FOR SEQ#03
(REF.DWG: S231)



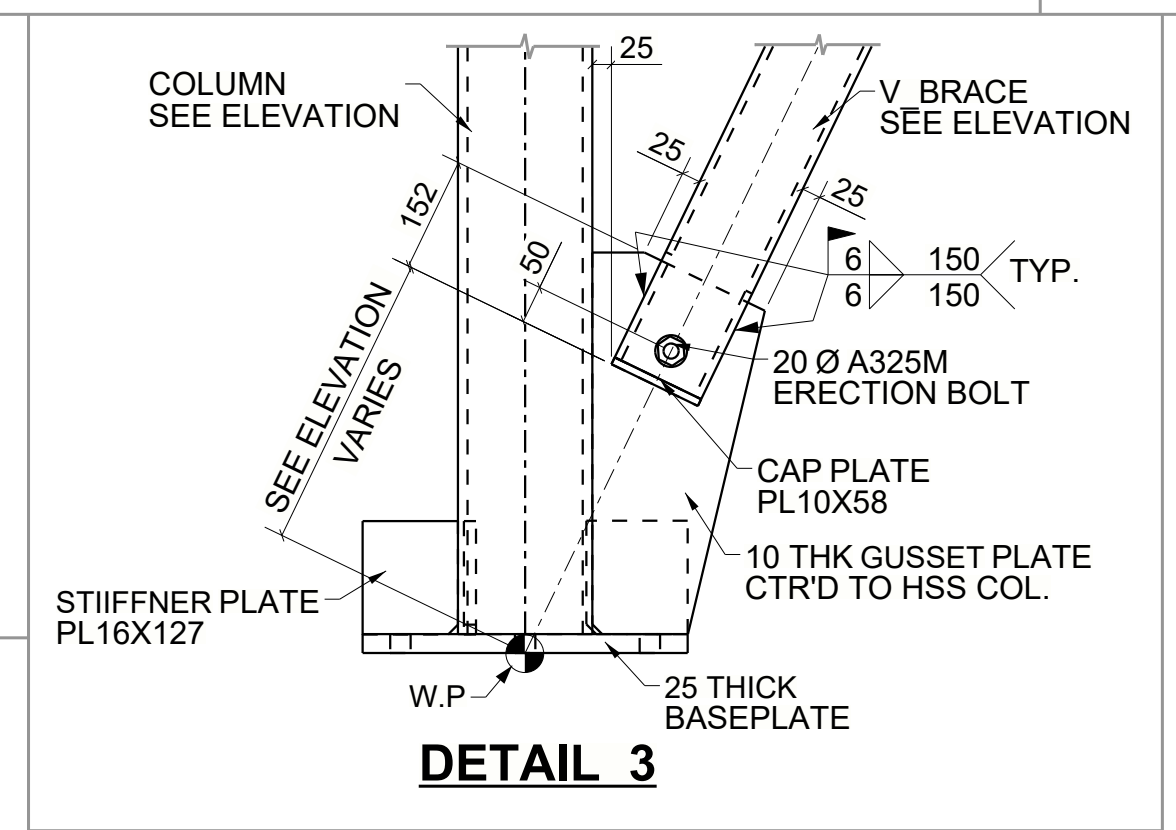
DETAIL 4



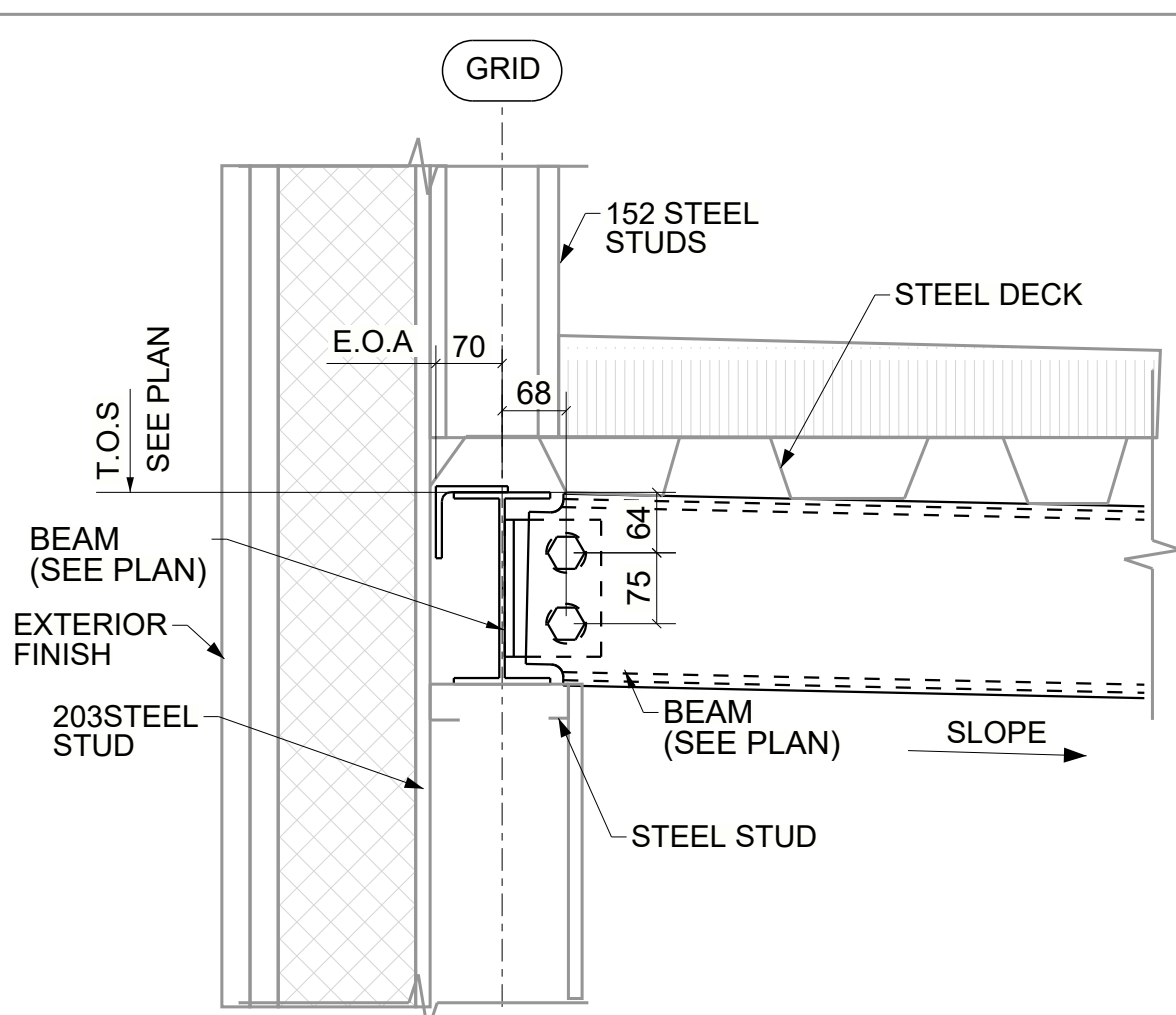
DETAIL 1
E3003



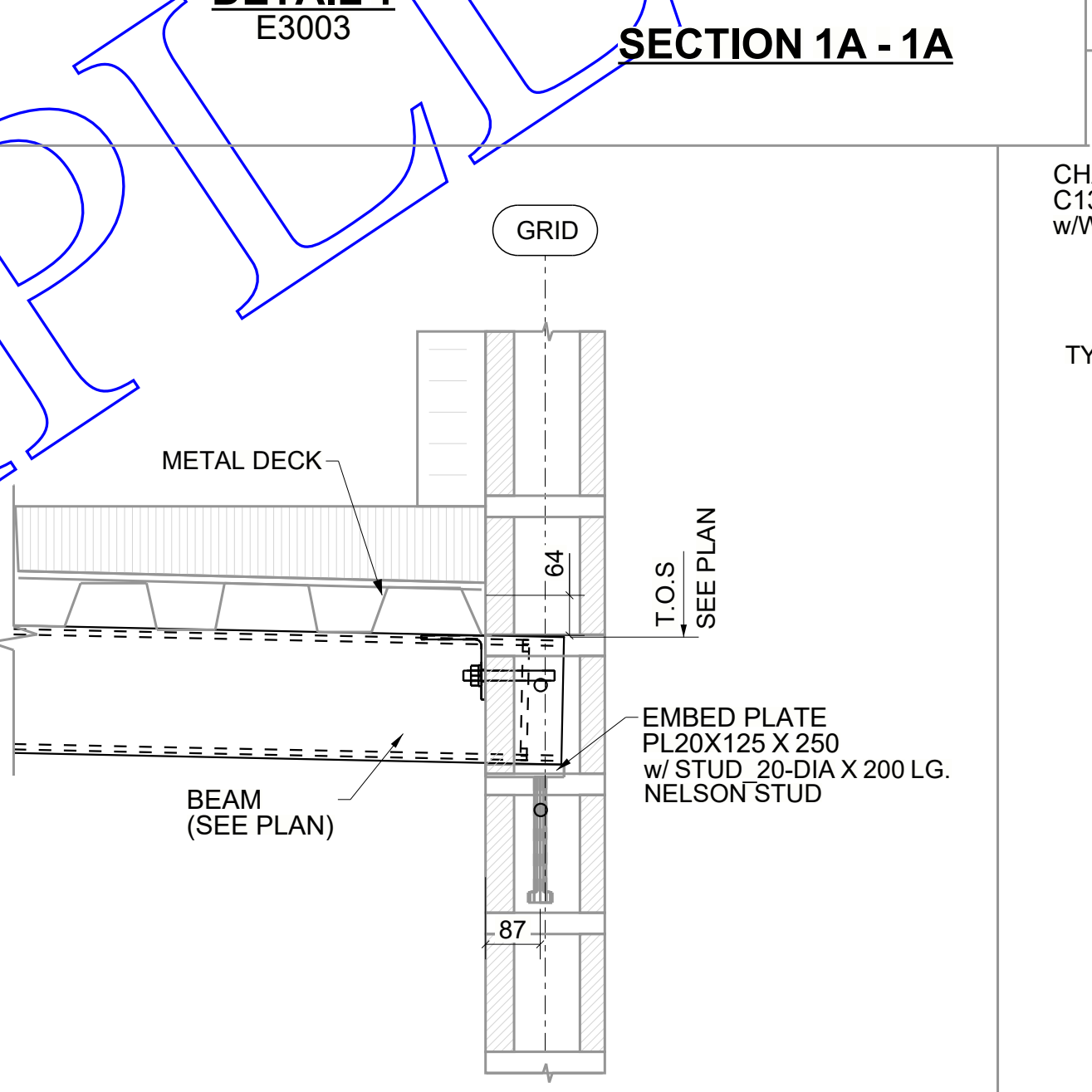
DETAIL 2
E3000



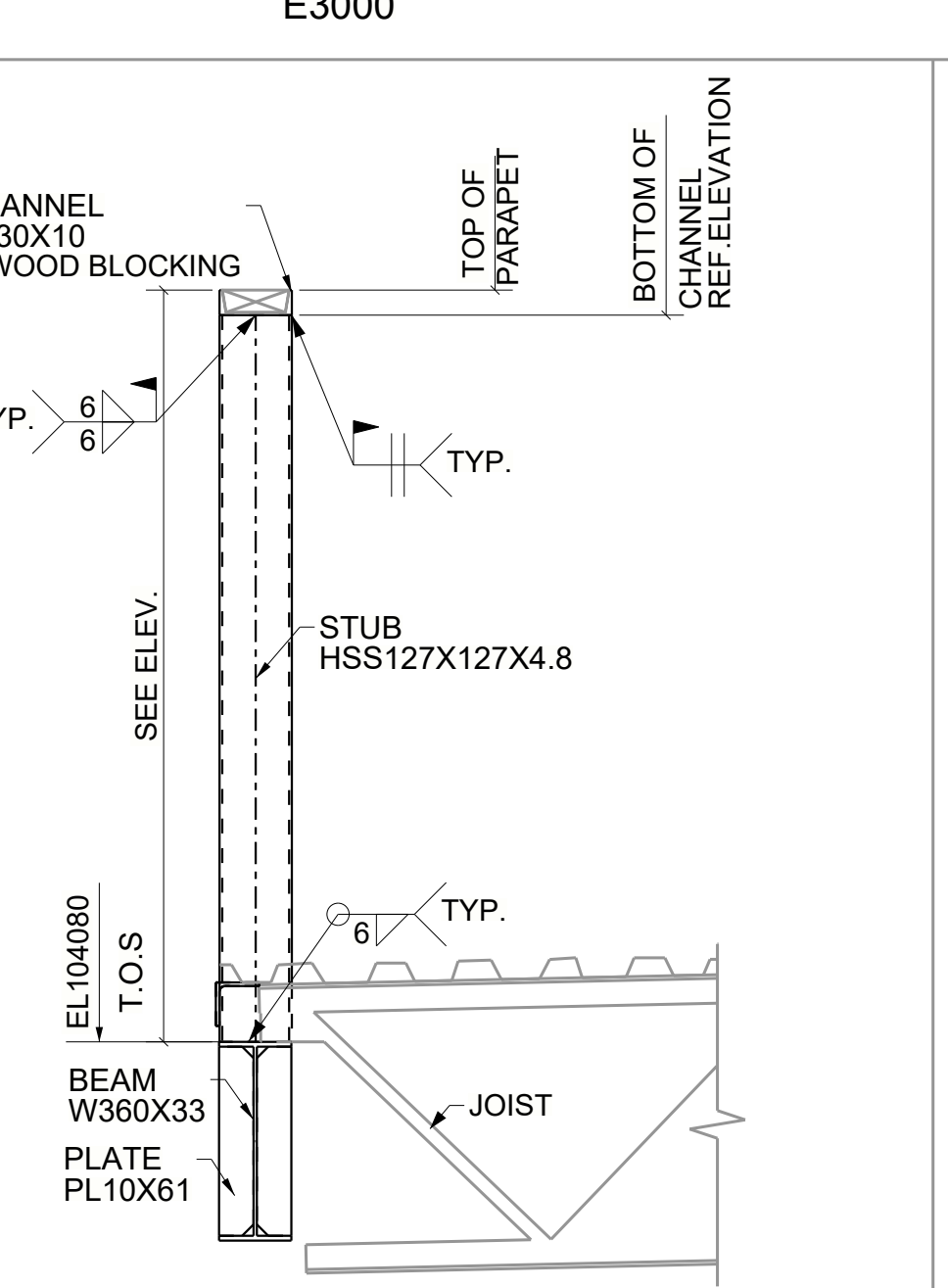
DETAIL 3



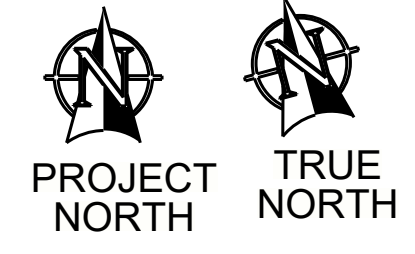
SECTION C - C
(REF.DWG: 10/S272)



SECTION D - D
(REF.DWG: 9/S273)



SECTION G - G
(REF.DWG: S202)

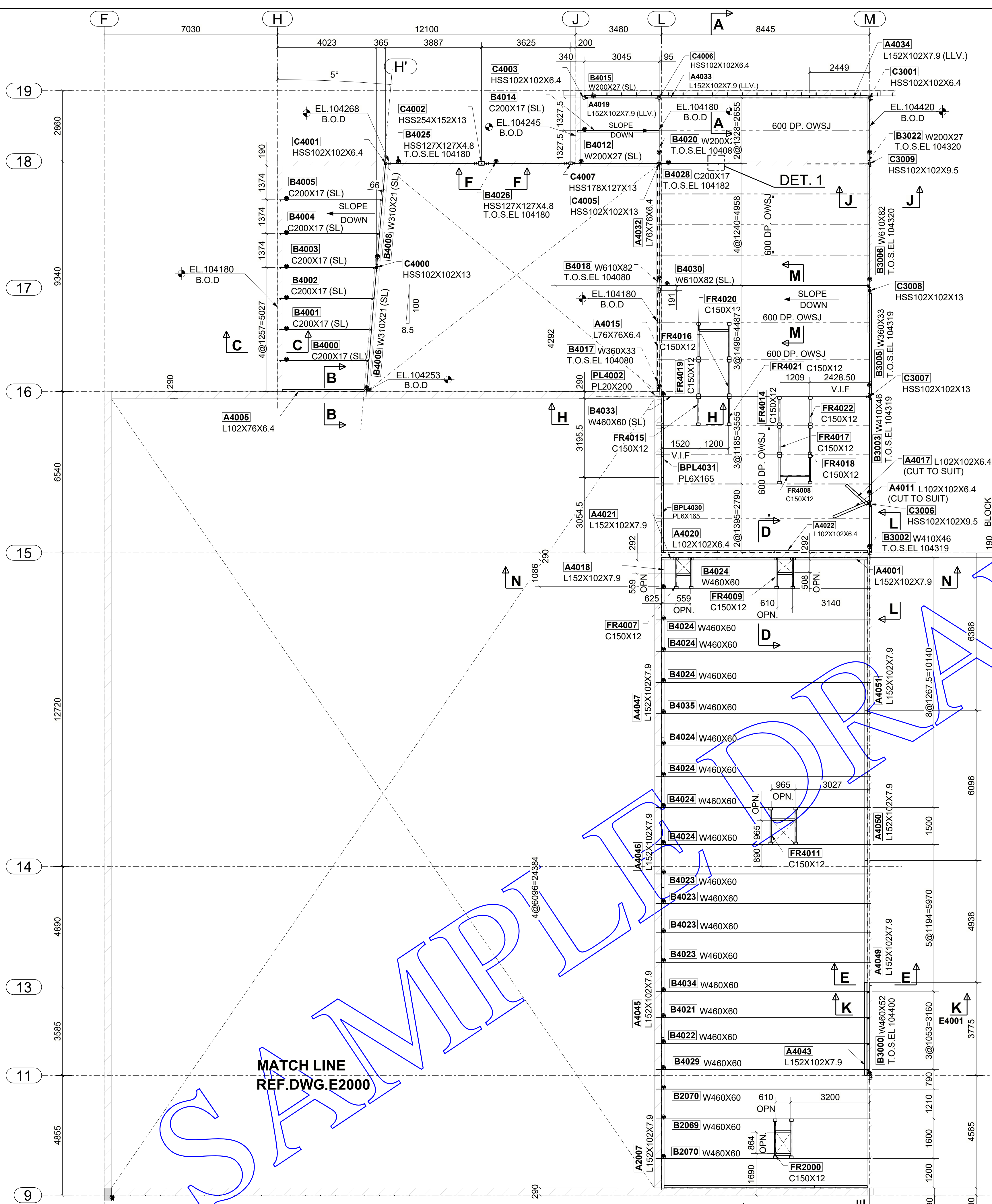


LEGEND:
 ◀ - ORIENTATION MARK
 T.O.S - TOP OF STEEL
 B.O.C - BOTTOM OF CHANNEL

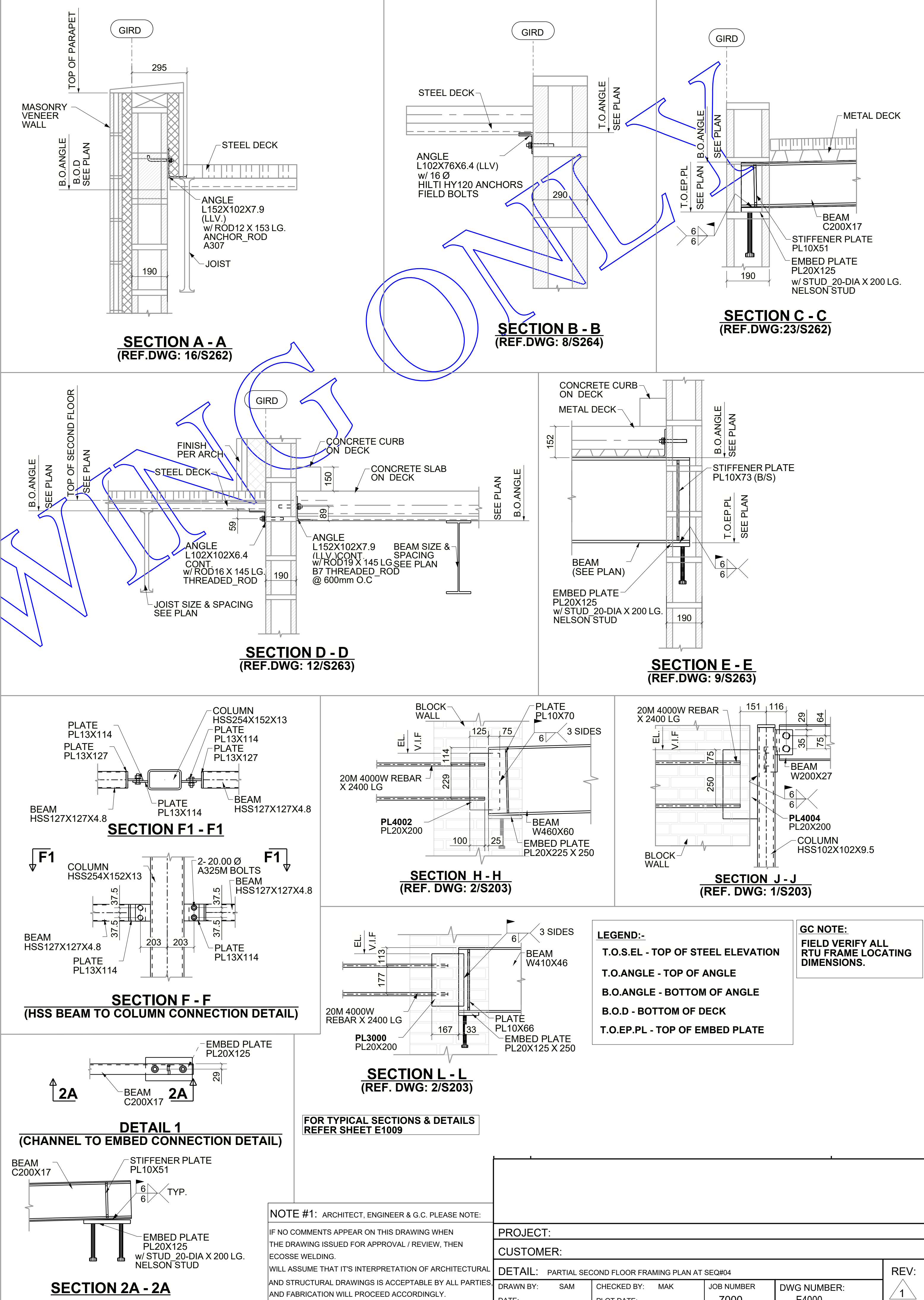
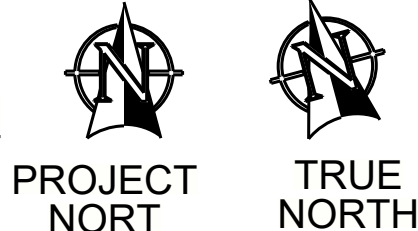
NOTE #1: ARCHITECT, ENGINEER & G.C. PLEASE NOTE:
 IF NO COMMENTS APPEAR ON THIS DRAWING WHEN THE DRAWING ISSUED FOR APPROVAL / REVIEW, THEN ECOSSE WELDING.
 WILL ASSUME THAT IT'S INTERPRETATION OF ARCHITECTURAL AND STRUCTURAL DRAWINGS IS ACCEPTABLE BY ALL PARTIES AND FABRICATION WILL PROCEED ACCORDINGLY.

PROJECT:		CUSTOMER:		REV: 1
DETAIL: ELEVATIONS OF SEQ#03		DATE:		
DRAWN BY: SAM	CHECKED BY: MAK	JOB NUMBER: 7000	DWG NUMBER: E3001	

SAMPLE DRAWING



SECOND FLOOR FRAMING PLAN AT AT SEQ#04
 (TOP OF STEEL EL. 104 248 (U.N.O))
 (REF. DWG: S231)

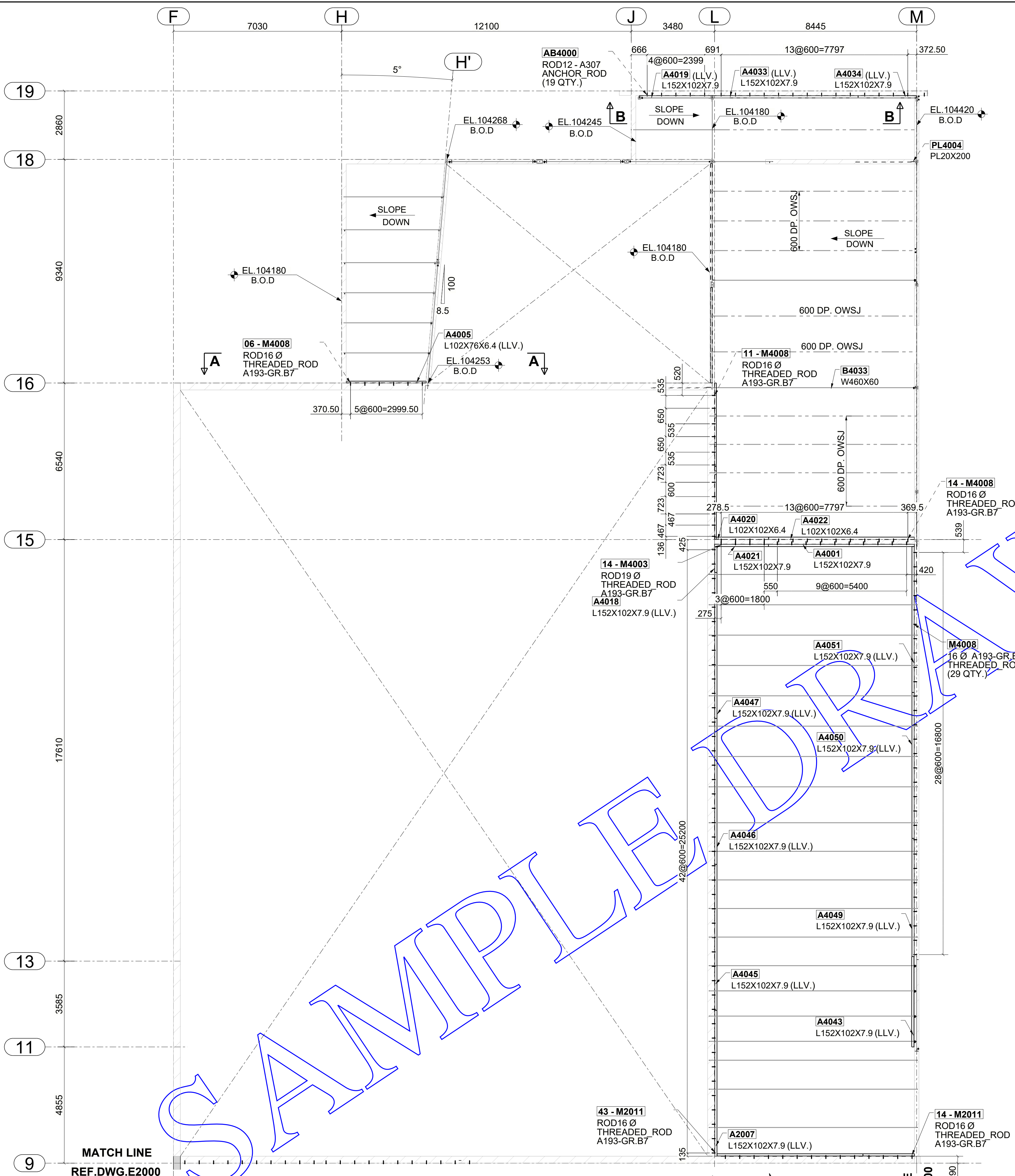


LEGEND:-
 T.O.S.EL - TOP OF STEEL ELEVATION
 T.O.ANGLE - TOP OF ANGLE
 B.O.ANGLE - BOTTOM OF ANGLE
 B.O.D - BOTTOM OF DECK
 T.O.EP.PL - TOP OF EMBED PLATE

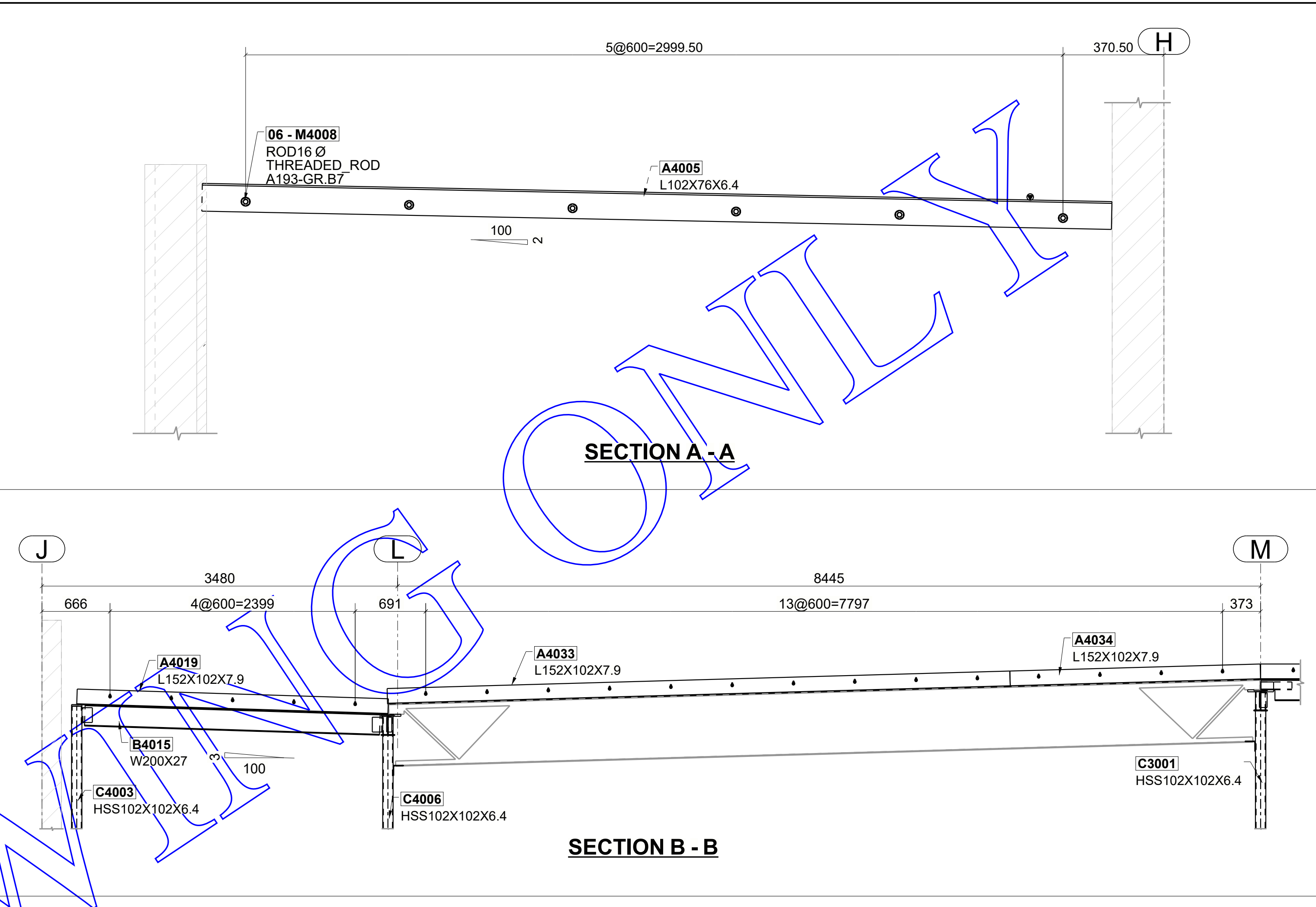
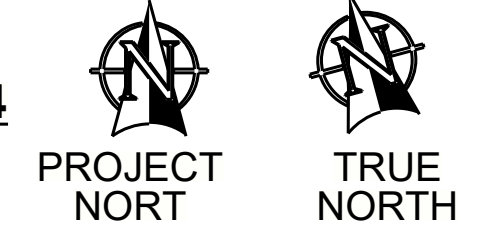
GC NOTE:
 FIELD VERIFY ALL RTU FRAME LOCATING DIMENSIONS.

NOTE #1: ARCHITECT, ENGINEER & G.C. PLEASE NOTE:
 IF NO COMMENTS APPEAR ON THIS DRAWING WHEN THE DRAWING ISSUED FOR APPROVAL / REVIEW, THEN ECOSSE WELDING.
 WILL ASSUME THAT ITS INTERPRETATION OF ARCHITECTURAL AND STRUCTURAL DRAWINGS IS ACCEPTABLE BY ALL PARTIES AND FABRICATION WILL PROCEED ACCORDINGLY.

PROJECT:		DETAIL: PARTIAL SECOND FLOOR FRAMING PLAN AT SEQ#04		REV:
DRAWN BY: SAM		CHECKED BY: MAK	JOB NUMBER: 7000	DWG NUMBER: E4000
DATE:	PLOT DATE:			1



ANCHORS LOCATING PLAN AT LEVEL 2 FOR SEQ#04
(REF.DWG: S231)



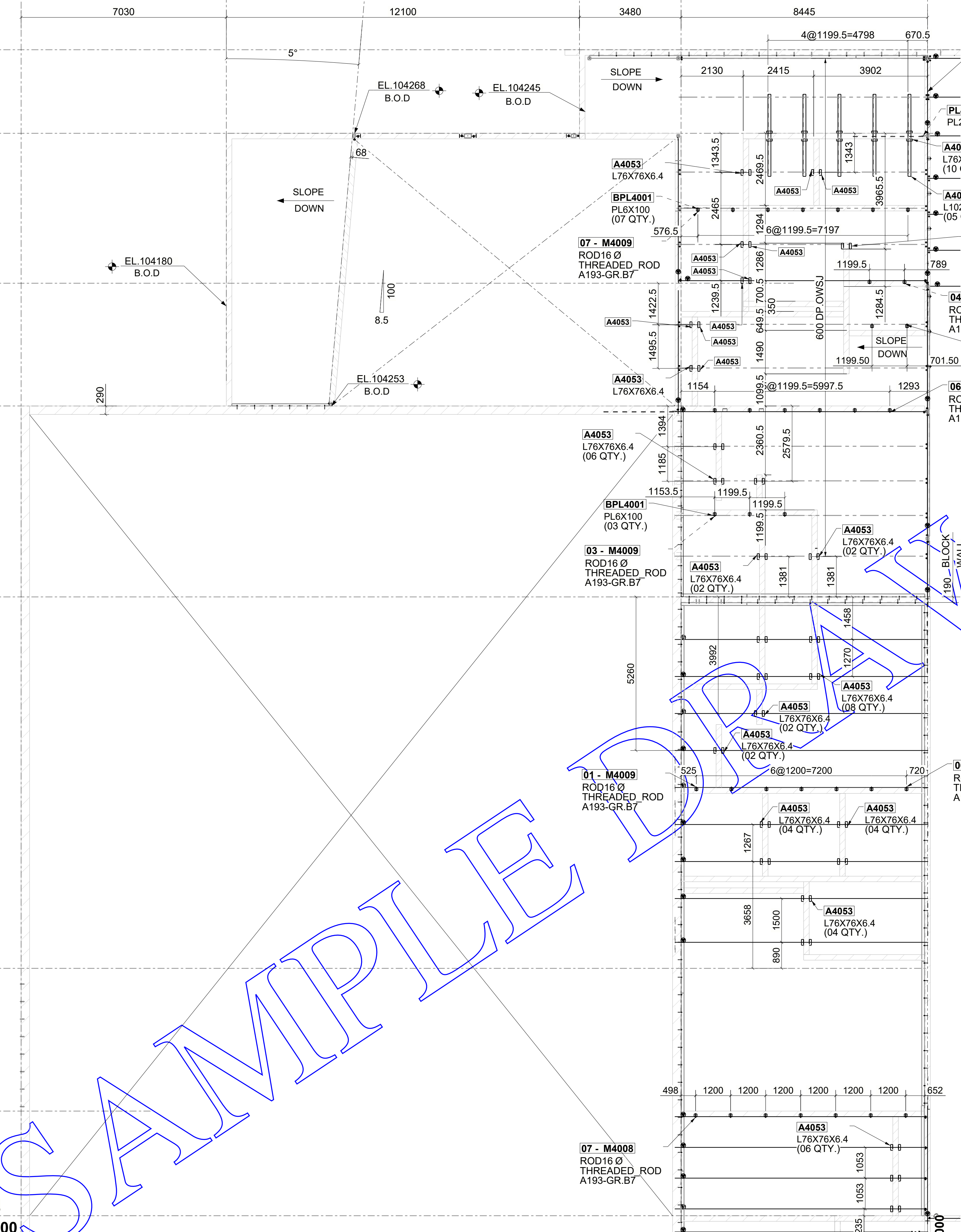
FOR TYPICAL SECTIONS & DETAILS REFER SHEET E1009

NOTE #1: ARCHITECT, ENGINEER & G.C. PLEASE NOTE:
IF NO COMMENTS APPEAR ON THIS DRAWING WHEN THE DRAWING ISSUED FOR APPROVAL / REVIEW, THEN ECOSSE WELDING.
WILL ASSUME THAT ITS INTERPRETATION OF ARCHITECTURAL AND STRUCTURAL DRAWINGS IS ACCEPTABLE BY ALL PARTIES AND FABRICATION WILL PROCEED ACCORDINGLY.

PROJECT:		CUSTOMER:		REV: 1
DETAIL: DECK SUPPORT ANCHORS LOCATING PLAN AT LEVEL 2 FOR SEQ#04		DATE:		
DRAWN BY: SAM	CHECKED BY: MAK	JOB NUMBER: 7000	DWG NUMBER: E4004	

F H H' J L M

19
18
17
16
15
14
13
11



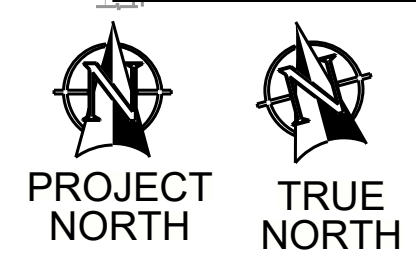
SAMPLE

FOR TYPICAL SECTIONS & DETAILS REFER SHEET E1009

ONLY

MATCH LINE
REF.DWG.E2000

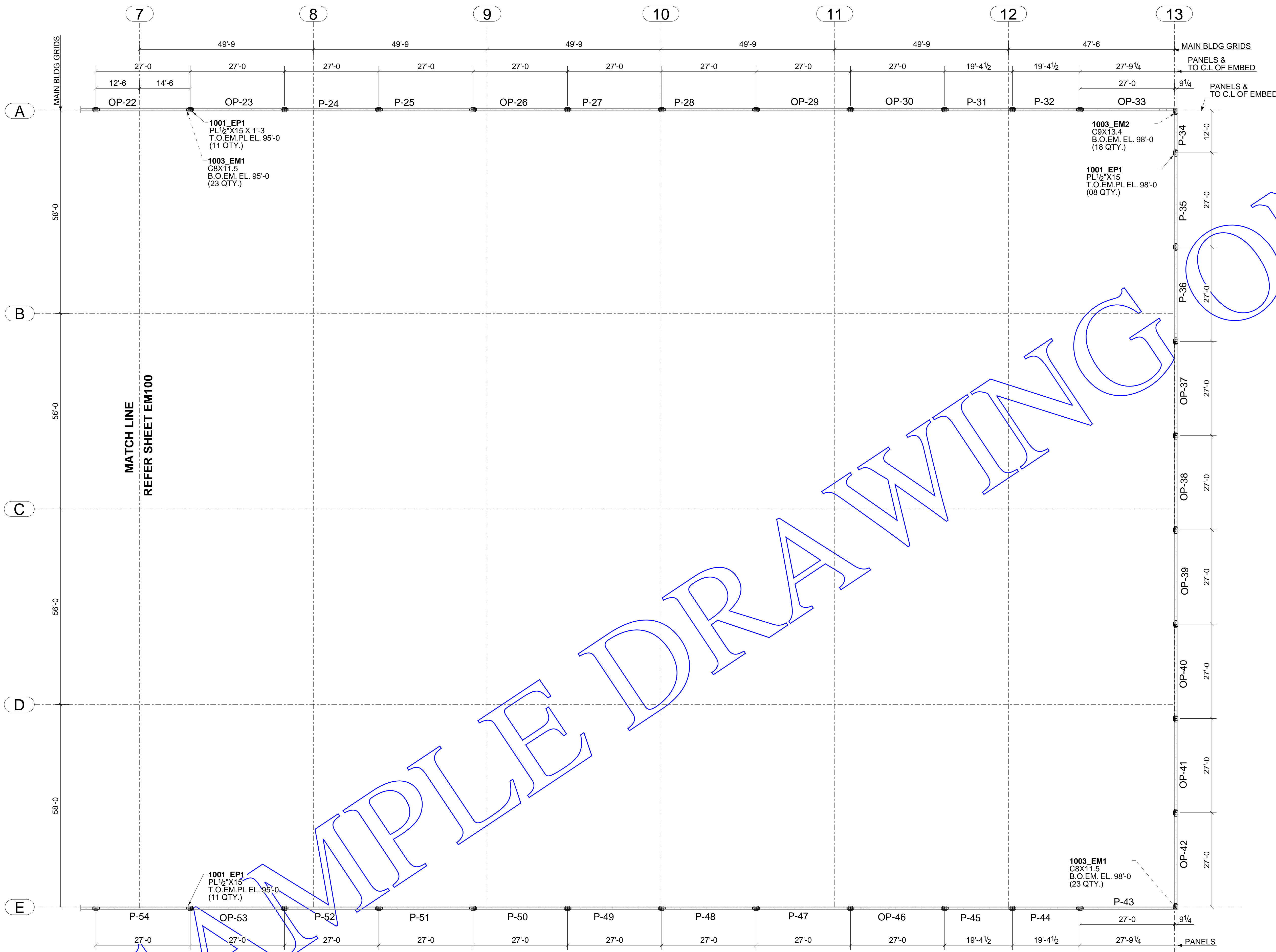
MASONRY WALL SUPPORT STEEL FRAMING AT SEQ#04
(REF. DWG: A2.04)



MATCH LINE
REF.DWG.E3000

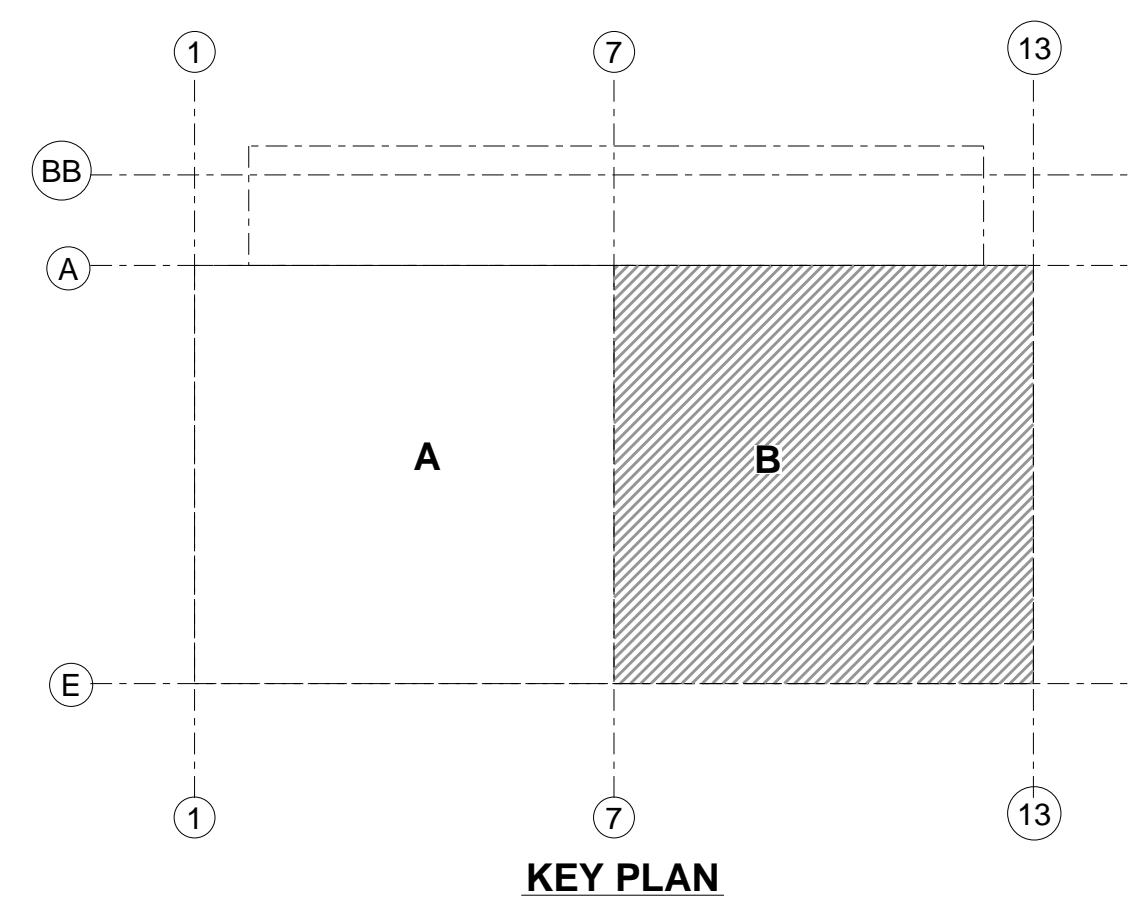
NOTE #1: ARCHITECT, ENGINEER & G.C. PLEASE NOTE:
IF NO COMMENTS APPEAR ON THIS DRAWING WHEN THE DRAWING ISSUED FOR APPROVAL / REVIEW, THEN ECOSSE WELDING.
WILL ASSUME THAT IT'S INTERPRETATION OF ARCHITECTURAL AND STRUCTURAL DRAWINGS IS ACCEPTABLE BY ALL PARTIES AND FABRICATION WILL PROCEED ACCORDINGLY.

PROJECT:		CUSTOMER:		REV: 1
DETAIL: MASONRY WALL SUPPORT STEEL FRAMING AT SEQ#04		DATE:		
DRAWN BY: SAM	CHECKED BY: MAK	JOB NUMBER: 7000	DWG NUMBER: E4007	
	PLOT DATE:			



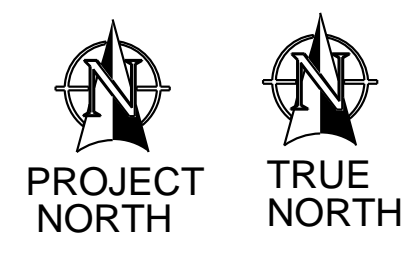
LEGEND:-
 1. EL. - ELEVATION.
 2. T.O.EA. - TOP OF EMBED ANGLE.
 3. T.O.EM.PL. - BOTTOM OF EMBED PLATE.

NOTE:-
 1. ALL DIMENSIONS ARE GIVEN TO CENTER LINE OF EMBEDPLATE ONLY.
 2. ALL TOP OF EMBED ELEVATIONS ARE REFERENCED TO CENTER LINE OF EMBED ONLY.



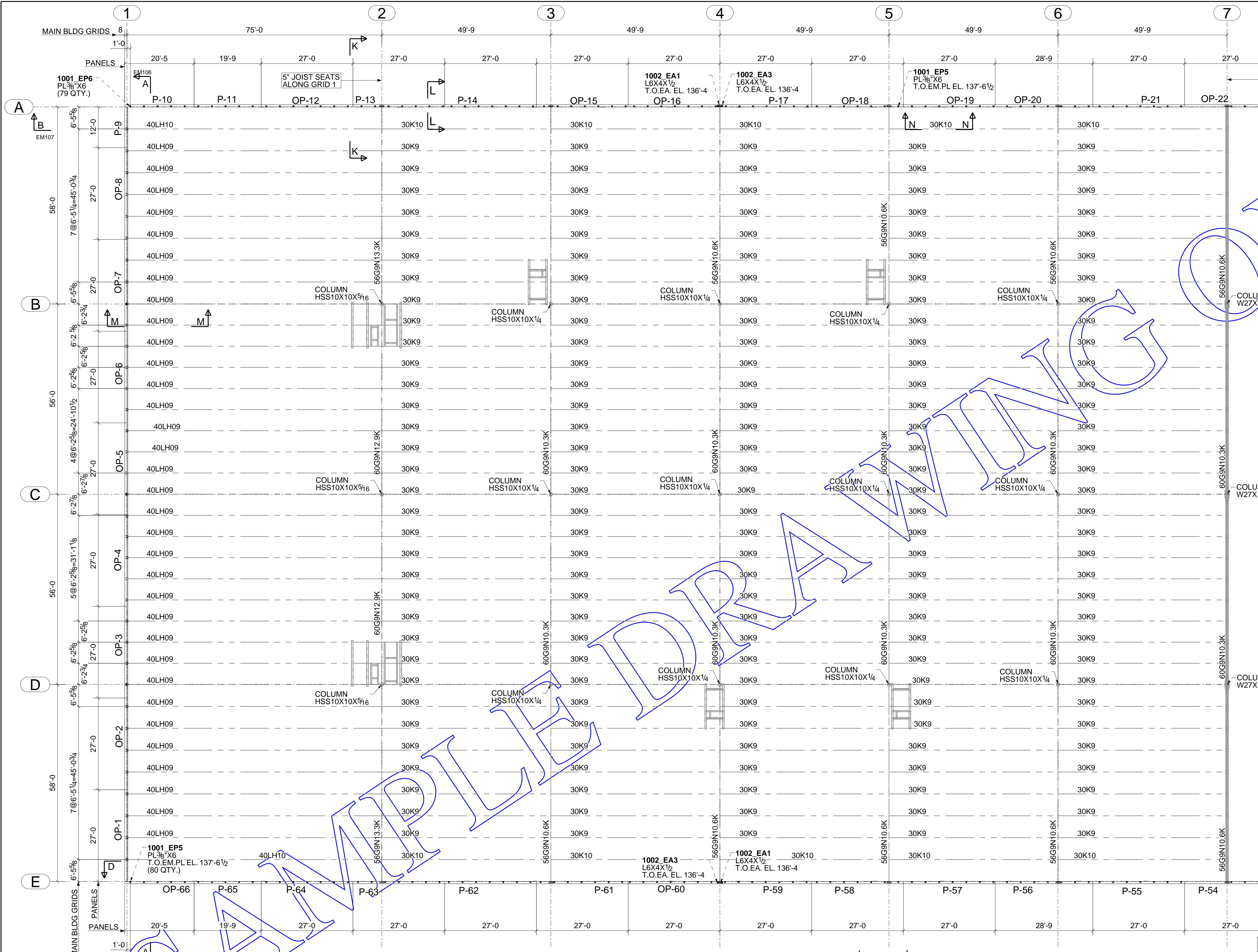
- ALL MATERIAL TO BE A36 UNLESS NOTED
- ALL TUBES TO BE A500-GRC (Fy=50) UNLESS NOTED
- ALL PIPES TO BE A53-GRB UNLESS NOTED
- ALL HS SHOP BOLTS TO BE TORQUED UNLESS NOTED
- ALL RUNNING DIMENSIONS FROM END OF MAIN MATERIAL
- ALL SHOP WELDS TO BE E70XX-LH ELECTRODES
- ALL COPES TO BE RADUSED
- ALL BEAMS TO BE FABRICATED WITH RESIDUAL CAMBER UP
- MEMBERS ARE TO BE ERECTED SO THAT MARKED END IS IN SAME LOCATION AS ON ERECTION DRAWING

PARTIAL EMBED SETTING PLAN @ FINISHED FLOOR - AREA B
 (REF. DWG: 1/S2.01B)



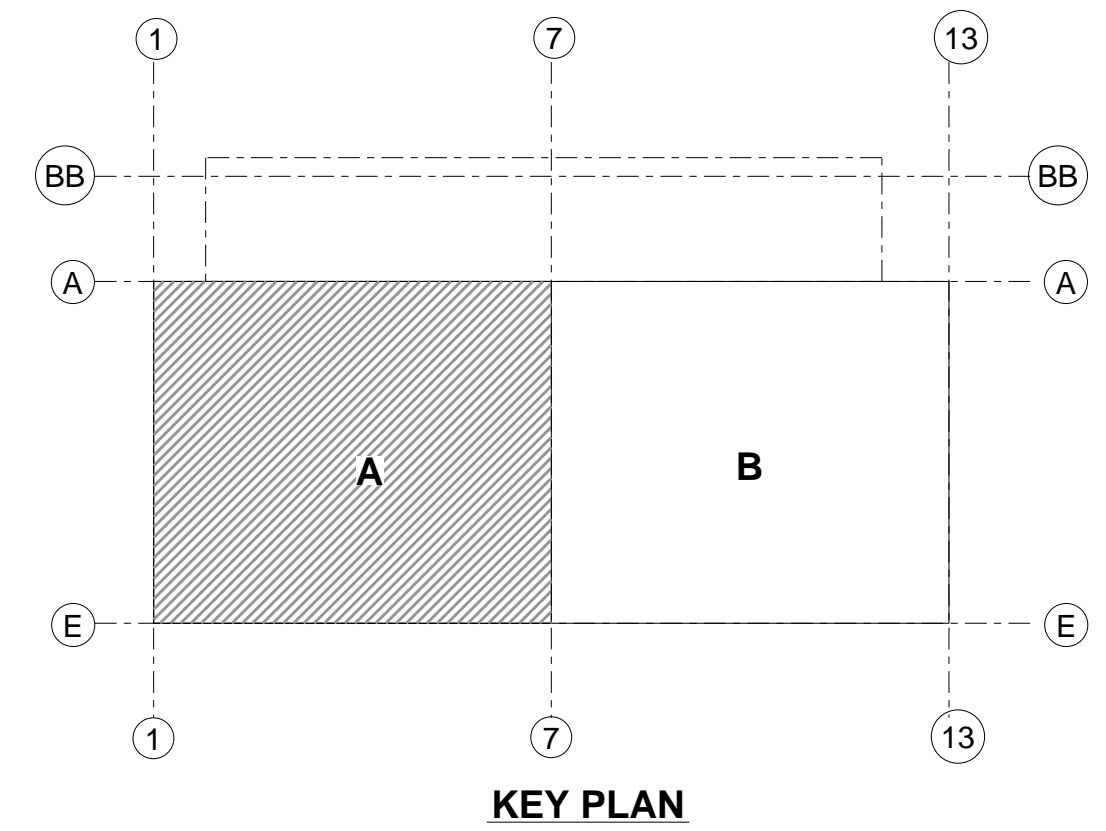
DETAILS OF : PARTIAL EMBED PLAN @ FINISHED FLOOR - AREA B REF. DWG. NO :

DATE:	USE	DRAW BY: SAM	TEKLA VERSION: 21.1	DRAW BY: SAM	CHECKED BY: MAK	CONNECTIONS	DWG. NO.	JOB NO.
				DATE:	DATE:	3/4 Ø A325	EM101	20-1044
						UNLESS NOTED		



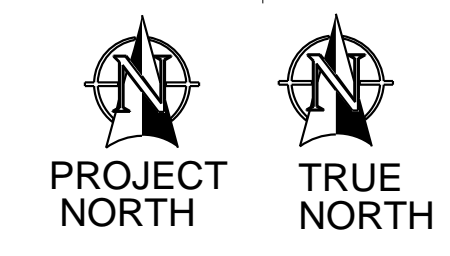
LEGEND:-
 1.EL. - ELEVATION.
 2. T.O.EA. - TOP OF EMBED ANGLE.
 3.T.O.EM.PL. - TOP OF EMBED PLATE .

NOTE:-
 1. ALL DIMENSIONS ARE GIVEN TO CENTER LINE OF EMBED PLATE ONLY.
 2. ALL TOP OF EMBED ELEVATIONS ARE REFERENCED TO CENTER LINE OF EMBED ONLY.
 3. REFER EM106-EM110 FOR EMBED LOCATING DIMENSIONS AND ELEVATIONS.



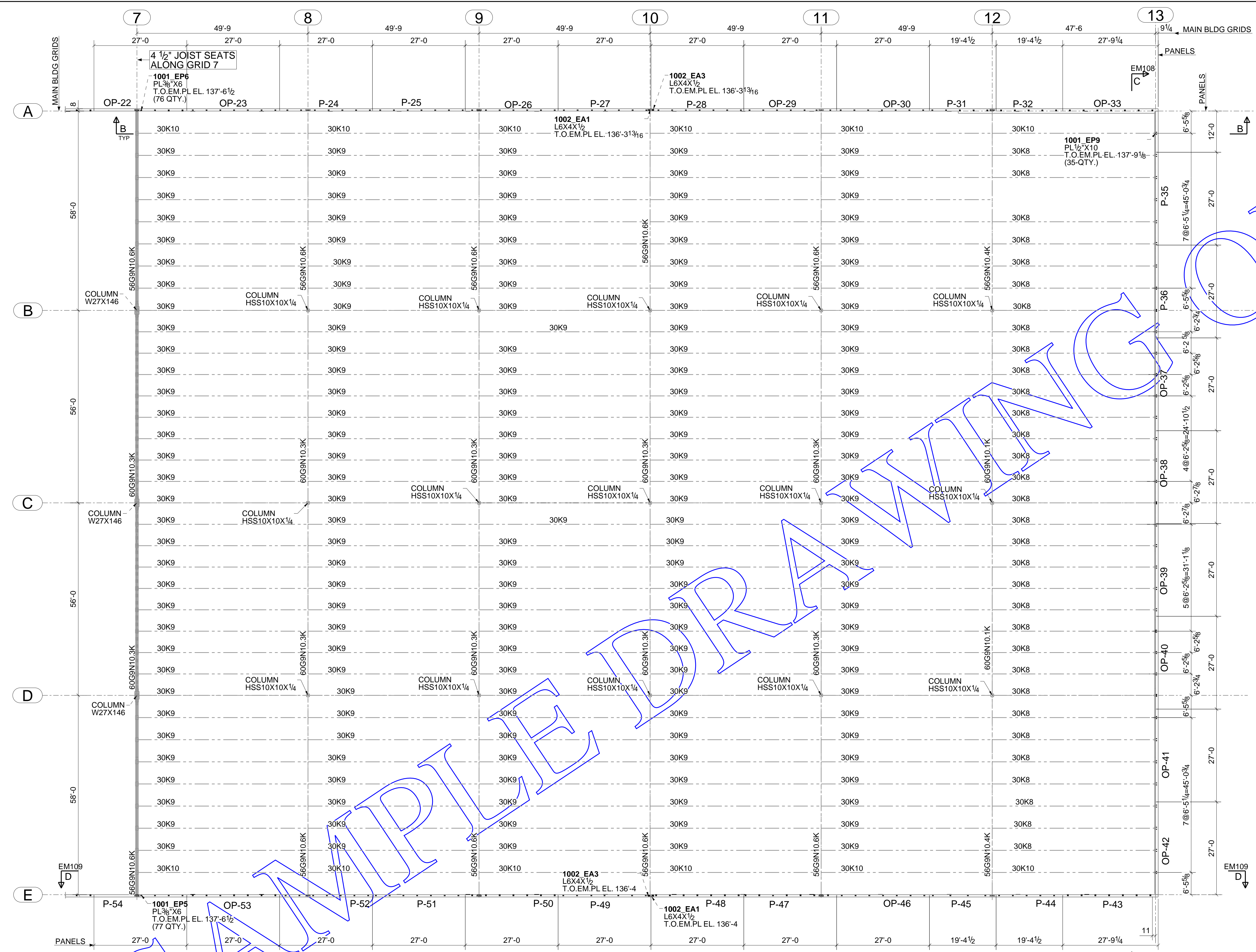
- ALL MATERIAL TO BE A36 UNLESS NOTED
- ALL TUBES TO BE A500-GRC (Fy=50) UNLESS NOTED
- ALL PIPES TO BE A53-GRB UNLESS NOTED
- ALL HS SHOP BOLTS TO BE TORQUED UNLESS NOTED
- ALL RUNNING DIMENSIONS FROM END OF MAIN MATERIAL
- ALL SHOP WELDS TO BE E70XX-LH ELECTRODES
- ALL COPES TO BE RADIUS
- ALL BEAMS TO BE FABRICATED WITH RESIDUAL CAMBER UP
- MEMBERS ARE TO BE ERECTED SO THAT MARKED END IS IN SAME LOCATION AS ON ERECTION DRAWING

PARTIAL EMBED SETTING PLAN AREA A
 (REF. DWG:S2.01A)



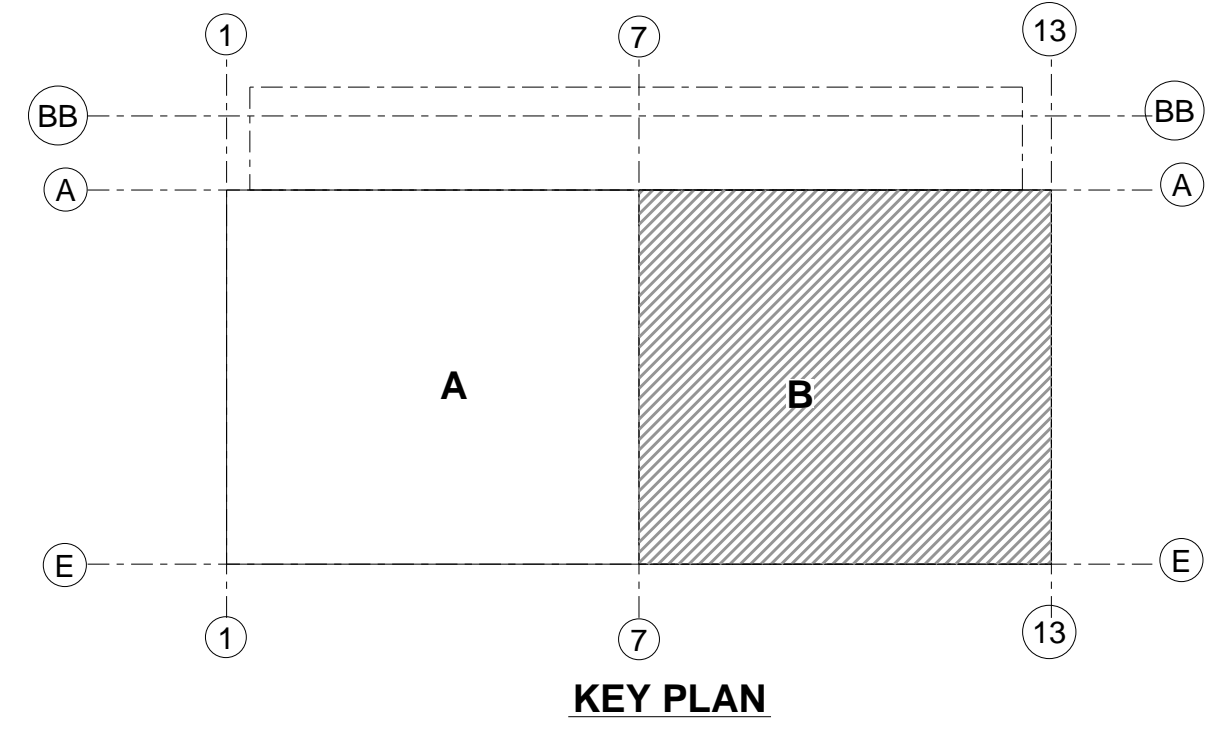
DETAILS OF : PARTIAL EMBED SETTING PLAN AREA A REF. DWG. NO :

DATE:	USE	DRAW BY: SAM	TEKLA VERSION: 21.1	DRAW BY: SAM	CHECKED BY: MAK	CONNECTIONS 3/4 Ø A325 UNLESS NOTED	DWG. NO. EM102	JOB NO. 20-1044
				DATE:	DATE:			



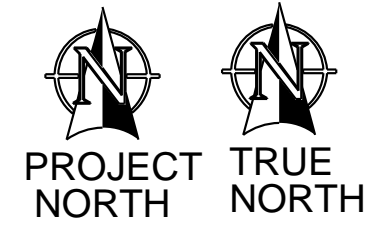
LEGEND:-
 1.EL. - ELEVATION.
 2. T.O.EA. - TOP OF EMBED ANGLE.
 3.T.O.EM.PL. - BOTTOM OF EMBED PLATE .

NOTE:-
 1. ALL DIMENSIONS ARE GIVEN TO CENTER LINE OF EMBEDPLATE ONLY.
 2. ALL TOP OF EMBED ELEVATIONS ARE REFERENCED TO CENTER LINE OF EMBED ONLY.
 3. REFER EM106-EM110 FOR EMBED LOACTING DIMENSIONS AND ELEVATIONS.



- ALL MATERIAL TO BE A36 UNLESS NOTED
- ALL TUBES TO BE A500-GRC (Fy=50) UNLESS NOTED
- ALL PIPES TO BE A53-GRB UNLESS NOTED
- ALL HS SHOP BOLTS TO BE TORQUED UNLESS NOTED
- ALL RUNNING DIMENSIONS FROM END OF MAIN MATERIAL
- ALL SHOP WELDS TO BE E70XX-LH ELECTRODES
- ALL COPES TO BE RADIUS
- ALL BEAMS TO BE FABRICATED WITH RESIDUAL CAMBER UP
- MEMBERS ARE TO BE ERECTED SO THAT MARKED END IS IN SAME LOCATION AS ON ERECTION DRAWING

PARTIAL EMBED SETTING PLAN - AREA B
 (REF.DWG: S2.01B)



DETAILS OF : PARTIAL EMBED SETTING PLAN - AREA B REF. DWG. NO :

DATE:	USE	DRAW BY: SAM	TEKLA VERSION: 21.1	DRAW BY: SAM	CHECKED BY: MAK	CONNECTIONS 3/4 Ø A325 UNLESS NOTED
				DATE:	DATE:	

DWG. NO.	JOB NO.
EM103	20-1044